

Anti-STAT1 antibody (650-750) (STJ113973)

GENERAL INFORMATION

Product Type	Primary antibodies
Applications	WB/IHC-P/IF/ICC/IP/ELISA
Host / Source	Rabbit
Reactivity	Human/Mouse/Rat

PRODUCT PROPERTIES

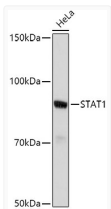
Clonality	Polyclonal
Concentration	Lot specific
Conjugation	Unconjugated
Purification	Affinity purification
Dilution Range	WB:1:500-1:1000 IHC-P:1:50-1:200 IF/ICC:1:50-1:200 IP:0.5 Mu g-4 Mu g antibody for 200 Mu g-400 Mu g extracts of whole cells ELISA:Recommended starting concentration is 1 Mu g/mL. Please optimize the concentration based on your specif
Formulation	PBS with 0.01% Thimerosal, 50% Glycerol, pH 7.3.
Isotype	IgG
Molecular Weight	Protein Mw: 87kDa Observed Mw: 91kDa
Storage Instruction	Store at -20°C for up to 1 year from the date of receipt, and avoid repeat freeze-thaw cycles.

TARGET INFORMATION

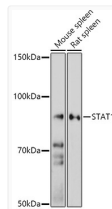
Gene ID	6772
Gene Symbol	STAT1
UniProt ID	STAT1_HUMAN
Immunogen Region	650-750
Immunogen Sequence	NYKVMAAENIPENPLKLYLP NIDKDHAFGKYYSRPKEAPE PMELDGPKGTYGIKTELISV SEVHPSRLQTTDNLPMSP EFDVSRIVGSEVFDMMNT V
Specificity	A synthetic peptide corresponding to a sequence within amino acids 650-750 of human STAT1 (NP_009330.1).

ADDITIONAL INFORMATION

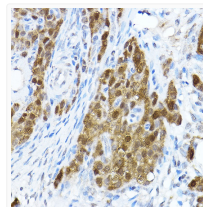
Note **STRICTLY FOR FURTHER SCIENTIFIC RESEARCH USE ONLY (RUO). MUST NOT TO BE USED IN DIAGNOSTIC OR THERAPEUTIC APPLICATIONS.**



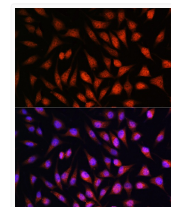
Western blot analysis of extracts of HeLa cells, using STAT1 antibody (STJ113973) at 1:500 dilution. Secondary antibody: HRP Goat Anti-rabbit IgG (H+L) (STJS000856) at 1:10000 dilution. Lysates/proteins: 25 Mu g per lane. Blocking buffer: 3% non-fat dry milk in TBST. Detection: ECL Basic Kit. Exposure time: 30s.



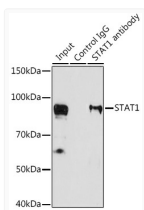
Western blot analysis of extracts of various cell lines, using STAT1 antibody (STJ113973) at 1:500 dilution. Secondary antibody: HRP Goat Anti-rabbit IgG (H+L) (STJS000856) at 1:10000 dilution. Lysates/proteins: 25 Mu g per lane. Blocking buffer: 3% non-fat dry milk in TBST. Detection: ECL Enhanced Kit. Exposure time: 180.



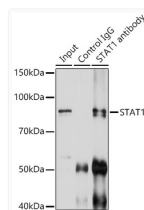
Immunohistochemistry analysis of paraffin-embedded rat ovary using STAT1 rabbit polyclonal antibody (STJ113973) at dilution of 1:100 (40x lens). Perform high pressure antigen retrieval with 10 mM citrate buffer pH 6.0 before commencing with immunohistochemistry staining protocol.



Immunofluorescence analysis of L929 cells using STAT1 rabbit polyclonal antibody (STJ113973) at dilution of 1:100. Blue: DAPI for nuclear staining.



Immunoprecipitation analysis of 200 Mu g extracts of U-87MG cells using 3 Mu g STAT1 antibody (STJ113973). Western blot was performed from the immunoprecipitate using STAT1 antibody (STJ113973) at a dilution of 1:1000.



Immunoprecipitation analysis of 200 Mu g extracts of U-87MG cells using 3 Mu g STAT1 rabbit polyclonal antibody (STJ113973). Western blot was performed from the immunoprecipitate using STAT1 rabbit polyclonal antibody (STJ113973) at a dilution of 1:500.