

Anti-HIP1R antibody (300-600) (STJ113927)

GENERAL INFORMATION

| | |
|---------------|--------------------|
| Product Type | Primary antibodies |
| Applications | WB/IF/ICC/ELISA |
| Host / Source | Rabbit |
| Reactivity | Human/Mouse/Rat |

PRODUCT PROPERTIES

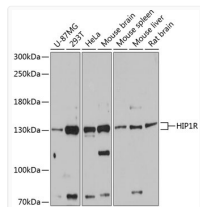
| | |
|---------------------|--|
| Clonality | Polyclonal |
| Concentration | Lot specific |
| Conjugation | Unconjugated |
| Purification | Affinity purification |
| Dilution Range | WB:1:500-1:2000 IF/CC:1:50-1:200 ELISA:Recommended starting concentration is 1 Mu g/mL. Please optimize the concentration based on your specific assay requirements. |
| Formulation | PBS with 0.01% Thimerosal, 50% Glycerol, pH 7.3. |
| Isotype | IgG |
| Molecular Weight | Protein Mw: 119kDa Observed Mw: 130kDa |
| Storage Instruction | Store at -20°C for up to 1 year from the date of receipt, and avoid repeat freeze-thaw cycles. |

TARGET INFORMATION

| | |
|--------------------|---|
| Gene ID | 9026 |
| Gene Symbol | HIP1R |
| UniProt ID | HIP1R_HUMAN |
| Immunogen Region | 300-600 |
| Immunogen Sequence | KPVVVIPEEAPEDDEEPENLI EISTGPPAGEPVVVADLFDQ TFGPPNGSVKDDRDLQIESL KREVEMLRSELEKIKLEAQR YIAQLKSQVNALEGELEEQR KQKQKALVDNEQLRHELAQL RAAQLEGRSOGRLREEAERK ASATEARYNKLKEKHSELVH VHAELLRKNADTAKQLTVTQ QSQEEVARVKEQLAFQVEQV KRESELKLEEKSDQLEKLKR ELEAKAGELARAQEQALSHT |
| Specificity | Recombinant fusion protein containing a sequence corresponding to amino acids 300-600 of human HIP1R (NP_003950.1). |

ADDITIONAL INFORMATION

Note STRICTLY FOR FURTHER SCIENTIFIC RESEARCH USE ONLY (RUO). MUST NOT TO BE USED IN DIAGNOSTIC OR THERAPEUTIC APPLICATIONS.



Western blot analysis of various lysates using HIP1R Rabbit polyclonal antibody (STJ113927) at 1:3000 dilution. Secondary antibody: HRP Goat Anti-Rabbit IgG (H+L) (STJS000856) at 1:10000 dilution. Lysates/proteins: 25 Mu g per lane. Blocking buffer: 3% nonfat dry milk in TBST. Detection: ECL Basic Kit. Exposure time: 60s.