

Anti-BYSL antibody (120-280) (STJ113897)

GENERAL INFORMATION

Product Type	Primary antibodies
Applications	WB/IHC-P/ELISA
Host / Source	Rabbit
Reactivity	Human/Mouse/Rat

PRODUCT PROPERTIES

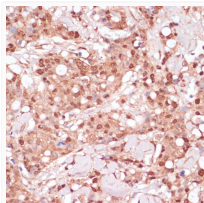
Clonality	Polyclonal
Concentration	Lot specific
Conjugation	Unconjugated
Purification	Affinity purification
Dilution Range	WB:1:500-1:2000 IHC-P:1:50-1:100 ELISA:Recommended starting concentration is 1 µg/mL. Please optimize the concentration based on your specific assay requirements.
Formulation	PBS with 0.01% Thimerosal, 50% Glycerol, pH 7.3.
Isotype	IgG
Molecular Weight	Protein Mw: 50kDa Observed Mw: 49kDa
Storage Instruction	Store at -20°C for up to 1 year from the date of receipt, and avoid repeat freeze-thaw cycles.

TARGET INFORMATION

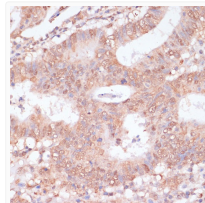
Gene ID	705
Gene Symbol	BYSL
UniProt ID	BYST_HUMAN
Immunogen Region	120-280
Immunogen Sequence	HAEVVVDPEDERAIEFMNKPAPPARRTLADIIMEKLTEKQTEVETVMSEVSGFMPQLDPRVLEVYRGVREVLISKYRSGKLPKAFKIIPALSNWEQILYVTEPEAWTAAAMYQATRIFASNLKERMAQRFYNLVLLPRVRDDVAEYKRLNFHLYMALKKAL
Specificity	Recombinant fusion protein containing a sequence corresponding to amino acids 120-280 of human BYSL (NP_004044.3).

ADDITIONAL INFORMATION

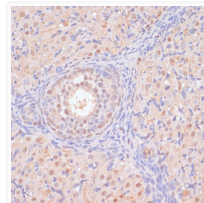
Note **STRICTLY FOR FURTHER SCIENTIFIC RESEARCH USE ONLY (RUO). MUST NOT BE USED IN DIAGNOSTIC OR THERAPEUTIC APPLICATIONS.**



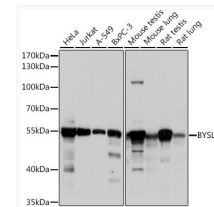
Immunohistochemistry analysis of BYSL in paraffin-embedded human breast cancer using BYSL Rabbit polyclonal antibody (STJ113897) at dilution of 1:100 (40x lens). Perform microwave antigen retrieval with 10 mM PBS buffer pH 7.2 before commencing with immunohistochemistry staining protocol.



Immunohistochemistry analysis of BYSL in paraffin-embedded human colon carcinoma using BYSL Rabbit polyclonal antibody (STJ113897) at dilution of 1:100 (40x lens). Perform microwave antigen retrieval with 10 mM PBS buffer pH 7.2 before commencing with immunohistochemistry staining protocol.



Immunohistochemistry analysis of BYSL in paraffin-embedded rat ovary using BYSL Rabbit polyclonal antibody (STJ113897) at dilution of 1:100 (40x lens). Perform microwave antigen retrieval with 10 mM PBS buffer pH 7.2 before commencing with immunohistochemistry staining protocol.



Western blot analysis of various lysates using BYSL Rabbit polyclonal antibody (STJ113897) at 1:1000 dilution. Secondary antibody: HRP Goat Anti-Rabbit IgG (H+L) (STJS000856) at 1:10000 dilution. Lysates/proteins: 25 µg per lane. Blocking buffer: 3% nonfat dry milk in TBST. Detection: ECL Basic Kit. Exposure time: 10s.