

Anti-CREB1 antibody (1-341) (STJ113894)

GENERAL INFORMATION

Product Type	Primary antibodies
Applications	WB/IHC-P/IF/ICC/IP/ELISA
Host / Source	Rabbit
Reactivity	Human/Mouse/Rat

PRODUCT PROPERTIES

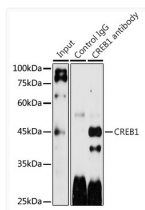
Clonality	Polyclonal
Concentration	Lot specific
Conjugation	Unconjugated
Purification	Affinity purification
Dilution Range	WB:1:500-1:2000 IHC-P:1:50-1:200 IF/CC:1:50-1:200 IP:0.5 Mu g-4 Mu g antibody for 200 Mu g-400 Mu g extracts of whole cells ELISA:Recommended starting concentration is 1 Mu g/mL. Please optimize the concentration based on your specif
Formulation	PBS with 0.05% Proclin300, 50% Glycerol, pH 7.3.
Isotype	IgG
Molecular Weight	Protein Mw: 35kDa Observed Mw: 43kDa
Storage Instruction	Store at -20°C for up to 1 year from the date of receipt, and avoid repeat freeze-thaw cycles.

TARGET INFORMATION

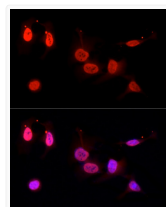
Gene ID	1385
Gene Symbol	CREB1
UniProt ID	CREB1_HUMAN
Immunogen Region	1-341
Immunogen Sequence	MTMESGAENQQSGDAAVTEA ENQQMTVQAQPQIATLAQVS MPAAHATSSAPTIVTLVQLPN GQTVQVHGVIQAAQPSVIQS PQVQTVQSSCKDLKRLFSGT QISTIAESEDSESVDSVTD SQKRREILSRPSPYRKILND LSSDAPGVPRIEEEKSEEEET SAPAITVTVPPIYQTSSG QYIAITQGGAIQLANNQTDG VQGLQTLTMTNAAATQPGTT ILQYAQTDDGQQLVPSNQ
Specificity	Recombinant fusion protein containing a sequence corresponding to amino acids 1-341 of human CREB1 (NP_604391.1).

ADDITIONAL INFORMATION

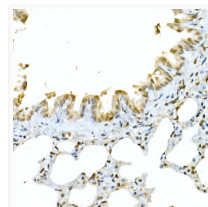
Note STRICTLY FOR FURTHER SCIENTIFIC RESEARCH USE ONLY (RUO). MUST NOT TO BE USED IN DIAGNOSTIC OR THERAPEUTIC APPLICATIONS.



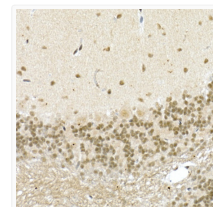
Immunoprecipitation analysis of 300 Mu g extracts of LO2 cells using 3 Mu g CREB1 antibody (STJ113894). Western blot was performed from the immunoprecipitate using CREB1 antibody (STJ113894) at a dilution of 1:1000.



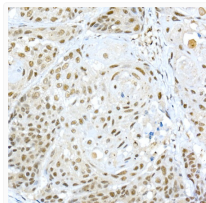
Immunofluorescence analysis of HeLa cells using CREB1 Rabbit polyclonal antibody (STJ113894) at a dilution of 1:25 (40x lens). Secondary antibody: Cy3 Goat Anti-Rabbit IgG (H+L) at 1:500 dilution. Blue: DAPI for nuclear staining.



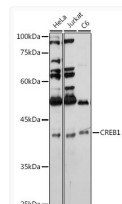
Immunohistochemistry analysis of CREB1 in paraffin-embedded rat lung using CREB1 Rabbit polyclonal antibody (STJ113894) at dilution of 1:50 (40x lens). Perform high pressure antigen retrieval with 10 mM citrate buffer pH 6.0 before commencing with immunohistochemistry staining protocol.



Immunohistochemistry analysis of CREB1 in paraffin-embedded mouse brain using CREB1 Rabbit polyclonal antibody (STJ113894) at dilution of 1:50 (40x lens). Perform high pressure antigen retrieval with 10 mM citrate buffer pH 6.0 before commencing with immunohistochemistry staining protocol.



Immunohistochemistry analysis of CREB1 in paraffin-embedded human esophageal cancer using CREB1 Rabbit polyclonal antibody (STJ113894) at dilution of 1:50 (40x lens). Perform high pressure antigen retrieval with 10 mM citrate buffer pH 6.0 before commencing with immunohistochemistry staining protocol.



Western blot analysis of various lysates using CREB1 Rabbit polyclonal antibody (STJ113894) at 1:1000 dilution. Secondary antibody: HRP Goat Anti-Rabbit IgG (H+L) (STJS000856) at 1:10000 dilution. Lysates/proteins: 25 Mu g per lane. Blocking buffer: 3% nonfat dry milk in TBST. Detection: ECL Basic Kit. Exposure time: 30s.