

Anti-ATG16L1 antibody (200-300) (STJ113881)

GENERAL INFORMATION

Product Type	Primary antibodies
Applications	WB/IHC-P/IF/ICC/ELISA
Host / Source	Rabbit
Reactivity	Human/Mouse/Rat

PRODUCT PROPERTIES

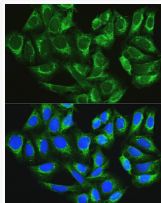
Clonality	Polyclonal
Concentration	Lot specific
Conjugation	Unconjugated
Purification	Affinity purification
Dilution Range	WB:1:500-1:2000 IHC-P:1:50-1:200 IF/CC:1:50-1:200 ELISA:Recommended starting concentration is 1 μ g/mL. Please optimize the concentration based on your specific assay requirements.
Formulation	PBS with 0.01% Thimerosal, 50% Glycerol, pH 7.3.
Isotype	IgG
Molecular Weight	Protein Mw: 68kDa Observed Mw: 72kDa
Storage Instruction	Store at -20°C for up to 1 year from the date of receipt, and avoid repeat freeze-thaw cycles.

TARGET INFORMATION

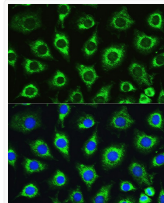
Gene ID	55054
Gene Symbol	ATG16L1
UniProt ID	A16L1_HUMAN
Immunogen Region	200-300
Immunogen Sequence	QEANRLNAENEKDSRRRQAR LQKELAEAAKEPLPVEQDD I EIVIVDETSDHTEETSPVRA ISRAATKRLSQPAGLLDSI TNIFGRRSVSSFPVPQDNVD T
Specificity	A synthetic peptide corresponding to a sequence within amino acids 200-300 of human ATG16L1 (NP_110430.5).

ADDITIONAL INFORMATION

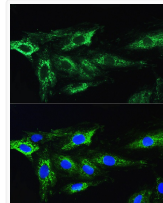
Note **STRICTLY FOR FURTHER SCIENTIFIC RESEARCH USE ONLY (RUO). MUST NOT TO BE USED IN DIAGNOSTIC OR THERAPEUTIC APPLICATIONS.**



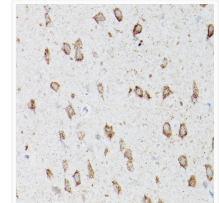
Immunofluorescence analysis of U2OS cells using ATG16L1 Rabbit polyclonal antibody (STJ113881) at dilution of 1:100. Blue: DAPI for nuclear staining.



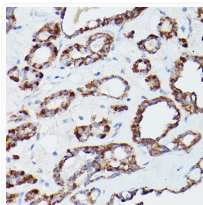
Immunofluorescence analysis of L929 cells using ATG16L1 Rabbit polyclonal antibody (STJ113881) at dilution of 1:100. Blue: DAPI for nuclear staining.



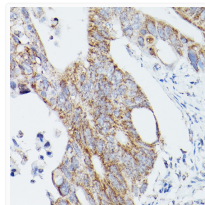
Immunofluorescence analysis of H9C2 cells using ATG16L1 Rabbit polyclonal antibody (STJ113881) at dilution of 1:100. Blue: DAPI for nuclear staining.



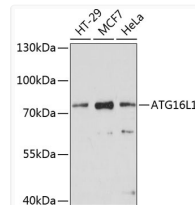
Immunohistochemistry analysis of ATG16L1 in paraffin-embedded mouse brain using ATG16L1 Rabbit polyclonal antibody (STJ113881) at dilution of 1:100 (40x lens). Perform microwave antigen retrieval with 10 mM PBS buffer pH 7.2 before commencing with immunohistochemistry staining protocol.



Immunohistochemistry analysis of ATG16L1 in paraffin-embedded human thyroid cancer using ATG16L1 Rabbit polyclonal antibody (STJ113881) at dilution of 1:100 (40x lens). Perform microwave antigen retrieval with 10 mM PBS buffer pH 7.2 before commencing with immunohistochemistry staining protocol.



Immunohistochemistry analysis of ATG16L1 in paraffin-embedded human colon carcinoma using ATG16L1 Rabbit polyclonal antibody (STJ113881) at dilution of 1:100 (40x lens). Perform microwave antigen retrieval with 10 mM PBS buffer pH 7.2 before commencing with immunohistochemistry staining protocol.



Western blot analysis of various lysates using ATG16L1 Rabbit polyclonal antibody (STJ113881) at 1:1000 dilution. Secondary antibody: HRP Goat Anti-Rabbit IgG (H+L) (STJS000856) at 1:10000 dilution. Lysates/proteins: 25 μ g per lane. Blocking buffer: 3% nonfat dry milk in TBST. Detection: ECL Enhanced Kit. Exposure time: 30s.