

Anti-LNPEP antibody (1-110) (STJ113875)

GENERAL INFORMATION

Product Type	Primary antibodies
Applications	WB/IHC-P/ELISA
Host / Source	Rabbit
Reactivity	Human/Mouse/Rat

PRODUCT PROPERTIES

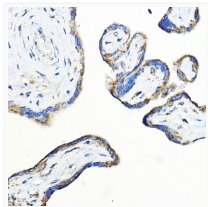
Clonality	Polyclonal
Concentration	Lot specific
Conjugation	Unconjugated
Purification	Affinity purification
Dilution Range	WB:1:100-1:500 IHC-P:1:50-1:200 ELISA:Recommended starting concentration is 1 µg/mL. Please optimize the concentration based on your specific assay requirements.
Formulation	PBS with 0.01% Thimerosal, 50% Glycerol, pH 7.3.
Isotype	IgG
Molecular Weight	Protein Mw: 117kDa Observed Mw: 165kDa
Storage Instruction	Store at -20°C for up to 1 year from the date of receipt, and avoid repeat freeze-thaw cycles.

TARGET INFORMATION

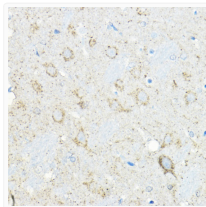
Gene ID	4012
Gene Symbol	LNPEP
UniProt ID	LCAP_HUMAN
Immunogen Region	1-110
Immunogen Sequence	MEPFTNDRQLQPRNMIENSM FEEEPDVVDLAKEPCLHPLE PDEVEYEPGRSRLLVRLGGE HEMEDEEDYESSAKLLGMS FMNRSSGLRNSATGYRQSPD GACSVPSART
Specificity	Recombinant fusion protein containing a sequence corresponding to amino acids 1-110 of human LNPEP (NP_005566.2).

ADDITIONAL INFORMATION

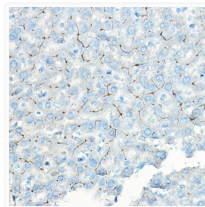
Note STRICTLY FOR FURTHER SCIENTIFIC RESEARCH USE ONLY (RUO). MUST NOT TO BE USED IN DIAGNOSTIC OR THERAPEUTIC APPLICATIONS.



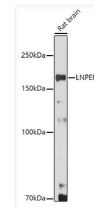
Immunohistochemistry analysis of LNPEP in paraffin-embedded human placenta using LNPEP Rabbit polyclonal antibody (STJ113875) at dilution of 1:100 (40x lens). Perform high pressure antigen retrieval with 10 mM citrate buffer pH 6.0 before commencing with immunohistochemistry staining protocol.



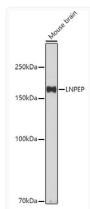
Immunohistochemistry analysis of LNPEP in paraffin-embedded rat brain using LNPEP Rabbit polyclonal antibody (STJ113875) at dilution of 1:100 (40x lens). Perform high pressure antigen retrieval with 10 mM citrate buffer pH 6.0 before commencing with immunohistochemistry staining protocol.



Immunohistochemistry analysis of LNPEP in paraffin-embedded rat liver using LNPEP Rabbit polyclonal antibody (STJ113875) at dilution of 1:100 (40x lens). Perform high pressure antigen retrieval with 10 mM citrate buffer pH 6.0 before commencing with immunohistochemistry staining protocol.



Western blot analysis of lysates from Rat brain, using LNPEP Rabbit polyclonal antibody (STJ113875) at 1:500 dilution. Secondary antibody: HRP Goat Anti-Rabbit IgG (H+L) (STJS000856) at 1:10000 dilution. Lysates/proteins: 25 µg per lane. Blocking buffer: 3% nonfat dry milk in TBST. Detection: ECL Enhanced Kit. Exposure time: 180s.



Western blot analysis of lysates from Mouse brain, using LNPEP Rabbit polyclonal antibody (STJ113875) at 1:500 dilution. Secondary antibody: HRP Goat Anti-Rabbit IgG (H+L) (STJS000856) at 1:10000 dilution. Lysates/proteins: 25 µg per lane. Blocking buffer: 3% nonfat dry milk in TBST. Detection: ECL Basic Kit. Exposure time: 180s.