

## Anti-HIF1A antibody (670-826) (STJ113863)

### GENERAL INFORMATION

Product Type	Primary antibodies
Applications	WB/IHC-P/IF/ICC/ELISA
Host / Source	Rabbit
Reactivity	Human/Mouse/Rat

### PRODUCT PROPERTIES

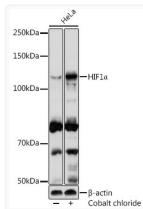
Clonality	Polyclonal
Concentration	Lot specific
Conjugation	Unconjugated
Purification	Affinity purification
Dilution Range	WB:1:500-1:1000 IHC-P:1:50-1:200 IF/ICC:1:50-1:200 ELISA:Recommended starting concentration is 1 Mu g/mL. Please optimize the concentration based on your specific assay requirements.
Formulation	PBS with 0.09% Sodium Azide, 50% Glycerol, pH7.3.
Isotype	IgG
Molecular Weight	Protein Mw: 93kDa Observed Mw: 120kDa
Storage Instruction	Store at -20°C for up to 1 year from the date of receipt, and avoid repeat freeze-thaw cycles.

### TARGET INFORMATION

Gene ID	<a href="#">3091</a>
Gene Symbol	<a href="#">HIF1A</a>
UniProt ID	<a href="#">HIF1A_HUMAN</a>
Immunogen Region	670-826
Immunogen Sequence	LAPAAGDTIISLDFGSNDTE TDDQQL EEVPLYNDVMLPSP NEKLQINLAMSP LPTAETP KPLRSSADPALNQEVALKLE PNPESELSFTMPQIQDQTP S
Specificity	A synthetic peptide corresponding to a sequence within amino acids 400-500 of HIF1 Alpha (NP_001521.1).

### ADDITIONAL INFORMATION

Note STRICTLY FOR FURTHER SCIENTIFIC RESEARCH USE ONLY (RUO). MUST NOT TO BE USED IN DIAGNOSTIC OR THERAPEUTIC APPLICATIONS.



Western blot analysis of lysates from HeLa cells, using HIF1 Alpha Rabbit pAb (STJ113863) at 1:1000 dilution. HeLa cells were treated by Cobalt chloride (0.1 mM) at 37 °C for 4 hours. Secondary antibody: HRP-conjugated Goat anti-Rabbit IgG (H+L) (STJS000856) at 1:10000 dilution.  
 Lysates/proteins: 25 Mu g per lane.  
 Blocking buffer: 3% nonfat dry milk in TBST.  
 Detection: ECL Basic Kit  
 Exposure time: 180s.