

Anti-NES antibody (1392-1621) (STJ113858)

GENERAL INFORMATION

Product Type	Primary antibodies
Applications	WB/IHC-P/IF/ICC/ELISA
Host / Source	Rabbit
Reactivity	Human/Mouse/Rat

PRODUCT PROPERTIES

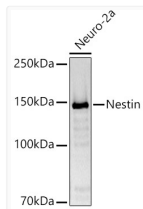
Clonality	Polyclonal
Concentration	Lot specific
Conjugation	Unconjugated
Purification	Affinity purification
Dilution Range	WB:1:500-1:1000 IHC-P:1:50-1:200 IF/ICC:1:50-1:200 ELISA:Recommended starting concentration is 1 Mu g/mL. Please optimize the concentration based on your specific assay requirements.
Formulation	PBS with 0.09% Sodium Azide, 50% Glycerol, pH7.3.
Isotype	IgG
Molecular Weight	Protein Mw: 177kDa Observed Mw: 150kDa/177kDa
Storage Instruction	Store at -20°C for up to 1 year from the date of receipt, and avoid repeat freeze-thaw cycles.

TARGET INFORMATION

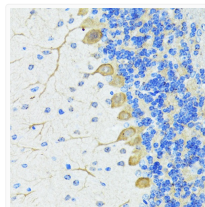
Gene ID	10763
Gene Symbol	NES
UniProt ID	NEST_HUMAN
Immunogen Region	1392-1621
Immunogen Sequence	QVPQLLLDPAAWDRDGEDSG FADEEESGEEGEEEDQEEGRE PGAGRWGPSSVGS LQALSS SQRGEFLESDSVSVVPWDD SLRGAVAGAPKTALETESQD SAEPGSEEEEDPVS LERED KVPGPLEIPSGMEDAGPGAD IIGVNGQGNLEGKSQHVNG GVMNGLEQSEEVGGMPLVS EGDRGSPFQEEEGSALKTSW AGAPVHLGQQQLKFTQREG DRESWSSGED
Specificity	A synthetic peptide corresponding to a sequence within amino acids 1392-1621 of human NES (NP_006608.1).

ADDITIONAL INFORMATION

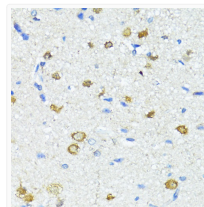
Note STRICTLY FOR FURTHER SCIENTIFIC RESEARCH USE ONLY (RUO). MUST NOT TO BE USED IN DIAGNOSTIC OR THERAPEUTIC APPLICATIONS.



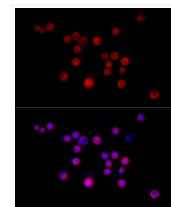
Western blot analysis of extracts of Neuro-2a cells, using Nestin antibody (STJ113858) at 1:1000 dilution. Secondary antibody: HRP Goat Anti-rabbit IgG (H+L) (STJS000856) at 1:10000 dilution. Lysates/proteins: 25 Mu g per lane. Blocking buffer: 3% non-fat dry milk in TBST. Detection: ECL Basic Kit. Exposure time: 3s.



Immunohistochemistry analysis of paraffin-embedded mouse brain using Nestin antibody (STJ113858) at dilution of 100 (40x lens). Perform microwave antigen retrieval with 10 mM PBS buffer pH 7. 2 before commencing with immunohistochemistry staining protocol.



Immunohistochemistry analysis of paraffin-embedded Rat brain using Nestin antibody (STJ113858) at dilution of 100 (40x lens). Perform microwave antigen retrieval with 10 mM PBS buffer pH 7. 2 before commencing with immunohistochemistry staining protocol.



Immunofluorescence analysis of Neuro-2a cells using Nestin rabbit polyclonal antibody (STJ113858) at dilution of 1:50 (40x lens). Blue: DAPI for nuclear staining.