

Anti-EGFR antibody (1021-1210) (STJ113840)

GENERAL INFORMATION

Product Type	Primary antibodies
Applications	WB/IHC-P/IF/ICC/ELISA
Host / Source	Rabbit
Reactivity	Human

PRODUCT PROPERTIES

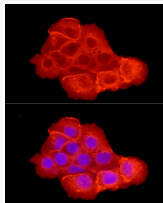
Clonality	Polyclonal
Concentration	Lot specific
Conjugation	Unconjugated
Purification	Affinity purification
Dilution Range	WB:1:500-1:1000 IHC-P:1:50-1:200 IF/CC:1:50-1:200 ELISA:Recommended starting concentration is 1 Mu g/mL. Please optimize the concentration based on your specific assay requirements.
Formulation	PBS with 0.05% Proclin300, 50% Glycerol, pH 7.3.
Isotype	IgG
Molecular Weight	Protein Mw: 134kDa Observed Mw: 175kDa
Storage Instruction	Store at -20°C for up to 1 year from the date of receipt, and avoid repeat freeze-thaw cycles.

TARGET INFORMATION

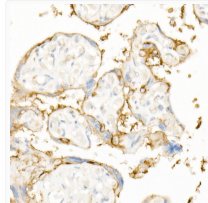
Gene ID	1956
Gene Symbol	EGFR
UniProt ID	EGFR_HUMAN
Immunogen Region	1021-1210
Immunogen Sequence	QGFFSSPSTSRTPLLSLSA TSNNSTVACIDRNLQSCPI KEDSFLQRYSSDPTGALTED SIDDTFLPVPEYINQSVPKR PAGSVQNPVYHNQPLNPAPS RDPHYQDPHSTAVGNPEYLN TVQPTCVNSTFDSPAHWQK GSHQISLDNPDYQQDFFPKE AKPNGIFKGSTAENAEYLRV APQSSEFIGA
Specificity	Recombinant fusion protein containing a sequence corresponding to amino acids 1021-1210 of human EGFR (NP_005219.2).

ADDITIONAL INFORMATION

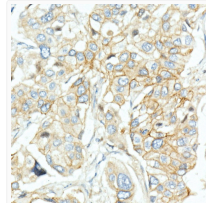
Note STRICTLY FOR FURTHER SCIENTIFIC RESEARCH USE ONLY (RUO). MUST NOT TO BE USED IN DIAGNOSTIC OR THERAPEUTIC APPLICATIONS.



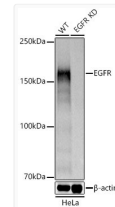
Immunofluorescence analysis of A-431 cells using [KD Validated] EGFR Rabbit polyclonal antibody (STJ113840) at dilution of 1:200 (40x lens). Secondary antibody: Cy3 Goat Anti-Rabbit IgG (H+L) at 1:500 dilution. Blue: DAPI for nuclear staining.



Immunohistochemistry analysis of EGFR in paraffin-embedded human placenta using [KD Validated] EGFR Rabbit polyclonal antibody (STJ113840) at dilution of 1:20 (40x lens). Perform high pressure antigen retrieval with 10 mM citrate buffer pH 6.0 before commencing with immunohistochemistry staining protocol.



Immunohistochemistry analysis of EGFR in paraffin-embedded human lung cancer using [KD Validated] EGFR Rabbit polyclonal antibody (STJ113840) at dilution of 1:20 (40x lens). Perform high pressure antigen retrieval with 10 mM citrate buffer pH 6.0 before commencing with immunohistochemistry staining protocol.



Western blot analysis of lysates from wild type (WT) and EGFR Rabbit polyclonal antibody knockdown (KD) HeLa cells, using [KD Validated] EGFR Rabbit polyclonal antibody (STJ113840) at 1:1000 dilution. Secondary antibody: HRP Goat Anti-Rabbit IgG (H+L) (STJS000856) at 1:10000 dilution. Lysates/proteins: 25 Mu g per lane. Blocking buffer: 3% nonfat dry milk in TBST. Detection: ECL Basic Kit. Exposure time: 0.5s.