

Anti-BRCA1 antibody (979-993) (STJ113833)

GENERAL INFORMATION

Product Type	Primary antibodies
Applications	IHC-P/IF/ICC/ELISA
Host / Source	Rabbit
Reactivity	Human

PRODUCT PROPERTIES

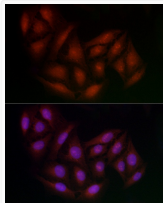
Clonality	Polyclonal
Concentration	Lot specific
Conjugation	Unconjugated
Purification	Affinity purification
Dilution Range	IHC-P:1:50-1:200 IF/CC:1:50-1:200 ELISA:Recommended starting concentration is 1 µg/mL. Please optimize the concentration based on your specific assay requirements.
Formulation	PBS with 0.02% Sodium Azide, 50% Glycerol, pH 7.3.
Isotype	IgG
Molecular Weight	Protein Mw: 208kDa Observed Mw: Refer to figures
Storage Instruction	Store at -20°C for up to 1 year from the date of receipt, and avoid repeat freeze-thaw cycles.

TARGET INFORMATION

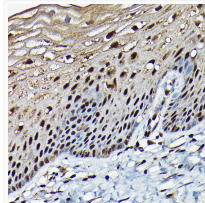
Gene ID	672
Gene Symbol	BRCA1
UniProt ID	BRCA1_HUMAN
Immunogen Region	979-993
Immunogen Sequence	FECEQKEENQGKNESNIKPV QTVNITAGFPVVGQKDKPVD NAKCSIKGGSRFCLSSQFRG NETGLITPNKHGLLQNPYRI PPLFPIKSFVKTKCKKNLLE ENFEEHSMSPEREMGNENIP STVSTISRNNIRENVFKEAS SSNINEVGSSTNEVGSSINE IGSSDENIQAELGRNRGPKL NAMLRLGLVLPQPEVYKQSLPG SNCKHPEIKKQEEYEEVVQTV NTDFSPYLISDNLEQPMGS
Specificity	A synthetic peptide corresponding to a sequence within amino acids 901-1000 of human BRCA1 (NP_009225.1).

ADDITIONAL INFORMATION

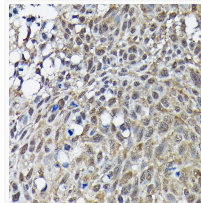
Note **STRICTLY FOR FURTHER SCIENTIFIC RESEARCH USE ONLY (RUO). MUST NOT TO BE USED IN DIAGNOSTIC OR THERAPEUTIC APPLICATIONS.**



Immunofluorescence analysis of U2OS cells using BRCA1 Rabbit polyclonal antibody (STJ113833) at dilution of 1:100 (40x lens). Secondary antibody: Cy3 Goat Anti-Rabbit IgG (H+L) at 1:500 dilution. Blue: DAPI for nuclear staining.



Immunohistochemistry analysis of BRCA1 in paraffin-embedded human normal cervix using BRCA1 Rabbit polyclonal antibody (STJ113833) at dilution of 1:100 (40x lens). Perform high pressure antigen retrieval with 10 mM citrate buffer pH 6.0 before commencing with immunohistochemistry staining protocol.



Immunohistochemistry analysis of BRCA1 in paraffin-embedded human lung cancer using BRCA1 Rabbit polyclonal antibody (STJ113833) at dilution of 1:100 (40x lens). Perform high pressure antigen retrieval with 10 mM citrate buffer pH 6.0 before commencing with immunohistochemistry staining protocol.