

## Anti-mTOR antibody (2400-2500) (STJ113771)

### GENERAL INFORMATION

Product Type	Primary antibodies
Applications	WB/IF/ICC/IP/ELISA
Host / Source	Rabbit
Reactivity	Human/Mouse

### PRODUCT PROPERTIES

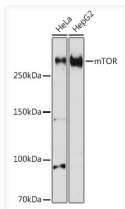
Clonality	Polyclonal
Concentration	Lot specific
Conjugation	Unconjugated
Purification	Affinity purification
Dilution Range	WB:1:100-1:500 IF/CC:1:50-1:200 IP:0.5 Mu g-4 Mu g antibody for 200 Mu g-400 Mu g extracts of whole cells ELISA:Recommended starting concentration is 1 Mu g/mL. Please optimize the concentration based on your specific assay requirements.
Formulation	PBS with 0.02% Sodium Azide, 50% Glycerol, pH 7.3.
Isotype	IgG
Molecular Weight	Protein Mw: 289kDa Observed Mw: 289kDa
Storage Instruction	Store at -20°C for up to 1 year from the date of receipt, and avoid repeat freeze-thaw cycles.

### TARGET INFORMATION

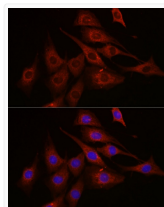
Gene ID	<a href="#">2475</a>
Gene Symbol	<a href="#">MTOR</a>
UniProt ID	<a href="#">MTOR_HUMAN</a>
Immunogen Region	2400-2500
Immunogen Sequence	CHTVMEVLREHKDSVMVAVLE AFVYDPLLNWRLMDTNTKGN KRSRTRTDSYSAGQSVEILD GVELGEPAHKKTGTTVPESI HSFIGDGLVKPEALNKKAIQ I
Specificity	A synthetic peptide corresponding to a sequence within amino acids 2400-2500 of human mTOR (NP_004949.1).

### ADDITIONAL INFORMATION

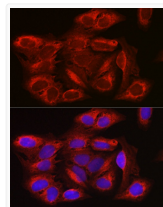
Note **STRICTLY FOR FURTHER SCIENTIFIC RESEARCH USE ONLY (RUO). MUST NOT TO BE USED IN DIAGNOSTIC OR THERAPEUTIC APPLICATIONS.**



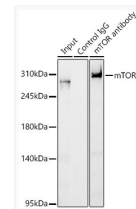
Western blot analysis of extracts of various cell lines, using mTOR antibody (STJ113771) at 1:500 dilution. Secondary antibody: HRP Goat Anti-rabbit IgG (H+L) (STJS000856) at 1:10000 dilution. Lysates/proteins: 25 Mu g per lane. Blocking buffer: 3% non-fat dry milk in TBST. Detection: ECL Basic Kit. Exposure time: 60s.



Immunofluorescence analysis of NIH-3T3 cells using mTOR rabbit polyclonal antibody (STJ113771) at dilution of 1:100 (40x lens). Blue: DAPI for nuclear staining.



Immunofluorescence analysis of U-2 OS cells using mTOR rabbit polyclonal antibody (STJ113771) at dilution of 1:100 (40x lens). Blue: DAPI for nuclear staining.



Immunoprecipitation analysis of 300ug extracts of K-562 cells using 3ug mTOR rabbit polyclonal antibody (STJ113771 1:50). Western blot was performed from the immunoprecipitate using mTOR rabbit polyclonal antibody (A2445) at a dilution of 1:500.