

Anti-CD274 antibody (19-238) (STJ113753)

GENERAL INFORMATION

Product Type	Primary antibodies
Applications	WB/IHC-P/ELISA
Host / Source	Rabbit
Reactivity	Human/Mouse/Rat

PRODUCT PROPERTIES

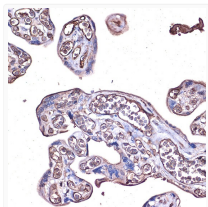
Clonality	Polyclonal
Concentration	Lot specific
Conjugation	Unconjugated
Purification	Affinity purification
Dilution Range	WB:1:100-1:500 IHC-P:1:50-1:200 ELISA:Recommended starting concentration is 1 Mu g/mL. Please optimize the concentration based on your specific assay requirements.
Formulation	PBS with 0.09% Sodium Azide, 50% Glycerol, pH 7.3.
Isotype	IgG
Molecular Weight	Protein Mw: 33kDa Observed Mw: 40-50kDa
Storage Instruction	Store at -20°C for up to 1 year from the date of receipt, and avoid repeat freeze-thaw cycles.

TARGET INFORMATION

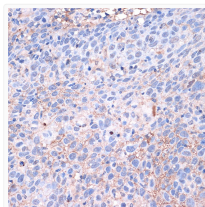
Gene ID	29126
Gene Symbol	CD274
UniProt ID	PD1L1_HUMAN
Immunogen Region	19-238
Immunogen Sequence	FTVTVPKDLVYVEYGSNMTI ECKFPVEKQLDLAALIVYWE MEDKNIQFVHGEEEDLKVQH SSYRQRARLLKDKLSLGNAA LQITDVKLQDAGVYRCMISY GGADYKRITVKVNPAPYNKIN QRILVDPVTSEHLCQAE GYPKAEVIWTSSDHQVLSGK TTTTNSKREEKLFNVTSTLR INTTTNEIFYCTFRRLDPEE NHTAELVIPELPLAHPNER
Specificity	A synthetic peptide corresponding to a sequence within amino acids 19-238 of human PD-L1/CD274 (NP_054862.1).

ADDITIONAL INFORMATION

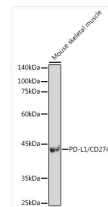
Note **STRICTLY FOR FURTHER SCIENTIFIC RESEARCH USE ONLY (RUO). MUST NOT TO BE USED IN DIAGNOSTIC OR THERAPEUTIC APPLICATIONS.**



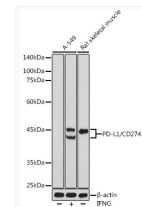
Immunohistochemistry analysis of PD-L1/CD274 in paraffin-embedded human placenta using PD-L1/CD274 Rabbit polyclonal antibody (STJ113753) at dilution of 1:100 (40x lens). Perform high pressure antigen retrieval with 10 mM citrate buffer pH 6.0 before commencing with immunohistochemistry staining protocol.



Immunohistochemistry analysis of PD-L1/CD274 in paraffin-embedded human esophageal cancer using PD-L1/CD274 Rabbit polyclonal antibody (STJ113753) at dilution of 1:100 (40x lens). Perform high pressure antigen retrieval with 10 mM citrate buffer pH 6.0 before commencing with immunohistochemistry staining protocol.



Western blot analysis of lysates from Mouse skeletal muscle, using PD-L1/CD274 Rabbit polyclonal antibody (STJ113753) at 1:500 dilution. Secondary antibody: HRP Goat Anti-Rabbit IgG (H+L) (STJS000856) at 1:10000 dilution. Lysates/proteins: 25 Mu g per lane. Blocking buffer: 3% nonfat dry milk in TBST. Detection: ECL Enhanced Kit. Exposure time: 180s.



Western blot analysis of various lysates using PD-L1/CD274 Rabbit polyclonal antibody (STJ113753) at 1:500 dilution. A-549 cells were treated by IFNG (100 ng/mL) at 37 °C for 48 hours. Secondary antibody: HRP Goat Anti-Rabbit IgG (H+L) (STJS000856) at 1:10000 dilution. Lysates/proteins: 25 Mu g per lane. Blocking buffer: 3% nonfat dry milk in TBST. Detection: ECL Basic Kit. Exposure time: 180s.