

Anti-TLR4 antibody (27-228) (STJ113740)

GENERAL INFORMATION

Product Type	Primary antibodies
Applications	WB/IF/ICC/IP/ELISA
Host / Source	Rabbit
Reactivity	Human/Mouse

PRODUCT PROPERTIES

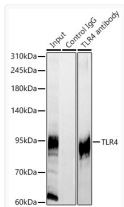
Clonality	Polyclonal
Concentration	Lot specific
Conjugation	Unconjugated
Purification	Affinity purification
Dilution Range	WB:1:500-1:1000 IF/CC:1:50-1:200 IP:0.5 Mu g-4 Mu g antibody for 200 Mu g-400 Mu g extracts of whole cells ELISA:Recommended starting concentration is 1 Mu g/mL. Please optimize the concentration based on your specific assay requirements
Formulation	PBS with 0.05% Proclin300, 50% Glycerol, pH 7.3.
Isotype	IgG
Molecular Weight	Protein Mw: 96kDa Observed Mw: 100-135kDa
Storage Instruction	Store at -20°C for up to 1 year from the date of receipt, and avoid repeat freeze-thaw cycles.

TARGET INFORMATION

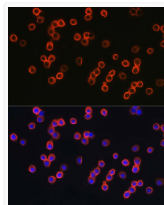
Gene ID	7099
Gene Symbol	TLR4
UniProt ID	TLR4_HUMAN
Immunogen Region	27-228
Immunogen Sequence	EPCVEVVPNITYQCMELNFY KIPDNLPFSTKNDLSFNPL RHLGYSYFFSFPELQVLDLS RCEIQTIEDGAYQSLSHLST LILTNPIQSLALGAFSGLS SLQKLVAVETNLALENFPI GHLKTLKELNVAHNLIQSFK LPEYFSNLTNLEHLDLSSNK IQSIYCTDLRVLHQMPLLNL SLDLSLNPMNFIQPGAFKEI RL
Specificity	Recombinant fusion protein containing a sequence corresponding to amino acids 27-228 of human TLR4 (NP_612564.1).

ADDITIONAL INFORMATION

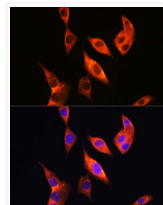
Note **STRICTLY FOR FURTHER SCIENTIFIC RESEARCH USE ONLY (RUO). MUST NOT TO BE USED IN DIAGNOSTIC OR THERAPEUTIC APPLICATIONS.**



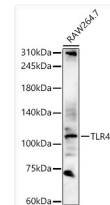
Immunoprecipitation analysis of 300ug extracts of HeLa cells using 3ug TLR4 Rabbit polyclonal antibody (STJ113740 1:100). Western blot was performed from the immunoprecipitate using TLR4 Rabbit polyclonal antibody (STJ113740) at a dilution of 1:500.



Immunofluorescence analysis of RAW264.7 cells using TLR4 Rabbit polyclonal antibody (STJ113740) at dilution of 1:200 (40x lens). Secondary antibody: Cy3 Goat Anti-Rabbit IgG (H+L) at 1:500 dilution. Blue: DAPI for nuclear staining.



Immunofluorescence analysis of HepG2 cells using TLR4 Rabbit polyclonal antibody (STJ113740) at dilution of 1:200 (40x lens). Secondary antibody: Cy3 Goat Anti-Rabbit IgG (H+L) at 1:500 dilution. Blue: DAPI for nuclear staining.



Western blot analysis of various lysates, using TLR4 Rabbit polyclonal antibody (STJ113740) at 1:2000 dilution. Secondary antibody: HRP Goat Anti-Rabbit IgG (H+L) (STJS000856) at 1:10000 dilution. Lysates/proteins: 25 Mu g per lane. Blocking buffer: 3% nonfat dry milk in TBST. Detection: ECL Basic Kit. Exposure time: 180s.