

Anti-PTEN antibody (1-200) (STJ113730)

GENERAL INFORMATION

Product Type	Primary antibodies
Applications	WB/IHC-P/IF/ICC/ELISA
Host / Source	Rabbit
Reactivity	Human/Mouse/Rat

PRODUCT PROPERTIES

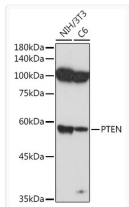
Clonality	Polyclonal
Concentration	Lot specific
Conjugation	Unconjugated
Purification	Affinity purification
Dilution Range	WB:1:500-1:1000 IHC-P:1:50-1:200 IF/ICC:1:50-1:200 ELISA:Recommended starting concentration is 1 µg/mL. Please optimize the concentration based on your specific assay requirements.
Formulation	PBS with 0.05% Proclin300, 50% Glycerol, pH 7.3.
Isotype	IgG
Molecular Weight	Protein Mw: 47kDa Observed Mw: 54kDa
Storage Instruction	Store at -20°C for up to 1 year from the date of receipt, and avoid repeat freeze-thaw cycles.

TARGET INFORMATION

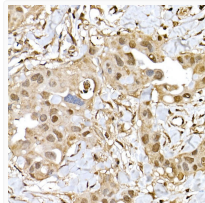
Gene ID	5728
Gene Symbol	PTEN
UniProt ID	PTEN_HUMAN
Immunogen Region	1-200
Immunogen Sequence	MTAIKEIVSRNKRRYQEDG FDLDLTYIYPNIAMGFPAE RLEGVYRNNIDDVVRFLDSK HKNHYKIYNLCAERHYDTAK FNCRVAQYPPFEDHNPQLEL IKPFCELDLQWLSEDDNHVA AIHCKAGKGRGTGMICAYLL HRGKFLKAQEALDFYGEVRT RDKKGVTPISQRRYVYYSY LLKNHLDYRPVALLFHKMMF
Specificity	Recombinant fusion protein containing a sequence corresponding to amino acids 1-200 of human PTEN (NP_000305.3).

ADDITIONAL INFORMATION

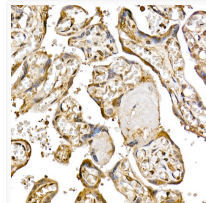
Note STRICTLY FOR FURTHER SCIENTIFIC RESEARCH USE ONLY (RUO). MUST NOT TO BE USED IN DIAGNOSTIC OR THERAPEUTIC APPLICATIONS.



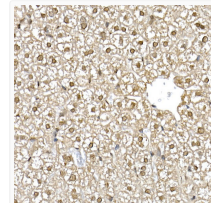
Western blot analysis of extracts of various cell lines, using PTEN antibody (STJ113730) at 1:1000 dilution. Secondary antibody: HRP Goat Anti-rabbit IgG (H+L) (STJS000856) at 1:10000 dilution. Lysates/proteins: 25 µg per lane. Blocking buffer: 3% non-fat dry milk in TBST. Detection: ECL Basic Kit. Exposure time: 90s.



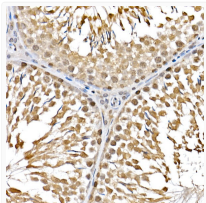
Immunohistochemistry analysis of paraffin-embedded human breast cancer using PTEN rabbit polyclonal antibody (STJ113730) at dilution of 1:200 (40x lens). Perform high pressure antigen retrieval with 10 mM citrate buffer pH 6.0 before commencing with immunohistochemistry staining protocol.



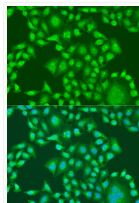
Immunohistochemistry analysis of paraffin-embedded human placenta using PTEN rabbit polyclonal antibody (STJ113730) at dilution of 1:200 (40x lens). Perform high pressure antigen retrieval with 10 mM citrate buffer pH 6.0 before commencing with immunohistochemistry staining protocol.



Immunohistochemistry analysis of paraffin-embedded mouse liver using PTEN rabbit polyclonal antibody (STJ113730) at dilution of 1:200 (40x lens). Perform high pressure antigen retrieval with 10 mM citrate buffer pH 6.0 before commencing with immunohistochemistry staining protocol.



Immunohistochemistry analysis of paraffin-embedded rat testis using PTEN rabbit polyclonal antibody (STJ113730) at dilution of 1:200 (40x lens). Perform high pressure antigen retrieval with 10 mM citrate buffer pH 6.0 before commencing with immunohistochemistry staining protocol.



Immunofluorescence analysis of U2OS cells using PTEN antibody (STJ113730) at dilution of 1:100. Blue: DAPI for nuclear staining.