

## Anti-BCL2 antibody (1-239) (STJ113693)

### GENERAL INFORMATION

Product Type	Primary antibodies
Applications	WB/IHC-P/IF/ICC/ELISA
Host / Source	Rabbit
Reactivity	Human/Mouse/Rat

### PRODUCT PROPERTIES

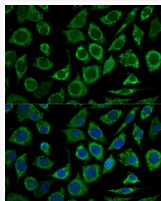
Clonality	Polyclonal
Concentration	Lot specific
Conjugation	Unconjugated
Purification	Affinity purification
Dilution Range	WB:1:500-1:1000 IHC-P:1:100-1:500 IF/ICC:1:50-1:200 ELISA:Recommended starting concentration is 1 Mu g/mL. Please optimize the concentration based on your specific assay requirements.
Formulation	PBS with 0.05% Proclin300, 50% Glycerol, pH 7.3.
Isotype	IgG
Molecular Weight	Protein Mw: 26kDa Observed Mw: 26kDa/
Storage Instruction	Store at -20°C for up to 1 year from the date of receipt, and avoid repeat freeze-thaw cycles.

### TARGET INFORMATION

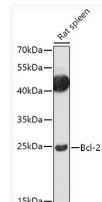
Gene ID	<a href="#">596</a>
Gene Symbol	<a href="#">BCL2</a>
UniProt ID	<a href="#">BCL2_HUMAN</a>
Immunogen Region	1-239
Immunogen Sequence	MAHAGRTGYDNREIVMKYIH YKLSQRGYEWDAGDVGAAPP GAAPAPGIFSSQPGHTPHPA ASRDPVARTSPLQTPAAPGA AAGPALSPPVPPVVHLTLRQA GDDFSRRYRRDFAEMSSQLH LTPFTARGRFATVVEELFRD GVNWGRIVAFFEFGVMCVE SVNREMSPLVDNIALWMTEY LNRHLHTWIQDNGGWDAFVE LYGSPMRPLFDLFDLWLSLKTLLSLALVGCITLGYLGHK
Specificity	Recombinant fusion protein containing a sequence corresponding to amino acids 1-239 of human Bcl-2 (NP_000624.2).

### ADDITIONAL INFORMATION

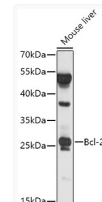
Note **STRICTLY FOR FURTHER SCIENTIFIC RESEARCH USE ONLY (RUO). MUST NOT TO BE USED IN DIAGNOSTIC OR THERAPEUTIC APPLICATIONS.**



Immunofluorescence analysis of L929 cells using Bcl-2 Rabbit polyclonal antibody (STJ113693) at dilution of 1:100. Secondary antibody: Cy3 Goat Anti-Rabbit IgG (H+L) at 1:500 dilution. Blue: DAPI for nuclear staining.



Western blot analysis of lysates from Rat spleen, using Bcl-2 Rabbit polyclonal antibody (STJ113693) at 1:1000 dilution. Secondary antibody: HRP Goat Anti-Rabbit IgG (H+L) (STJS000856) at 1:10000 dilution. Lysates/proteins: 25 Mu g per lane. Blocking buffer: 3% nonfat dry milk in TBST. Detection: ECL Basic Kit. Exposure time: 90s.



Western blot analysis of lysates from Mouse liver, using Bcl-2 Rabbit polyclonal antibody (STJ113693) at 1:1000 dilution. Secondary antibody: HRP Goat Anti-Rabbit IgG (H+L) (STJS000856) at 1:10000 dilution. Lysates/proteins: 25 Mu g per lane. Blocking buffer: 3% nonfat dry milk in TBST. Detection: ECL Basic Kit. Exposure time: 30s.