

Anti-MAPRE3 antibody (1-281) (STJ113659)

GENERAL INFORMATION

Product Type	Primary antibodies
Applications	WB/ELISA
Host / Source	Rabbit
Reactivity	Mouse

PRODUCT PROPERTIES

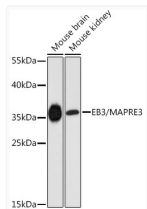
Clonality	Polyclonal
Concentration	Lot specific
Conjugation	Unconjugated
Purification	Affinity purification
Dilution Range	WB:1:1000-1:3000 ELISA:Recommended starting concentration is 1 µg/mL. Please optimize the concentration based on your specific assay requirements.
Formulation	PBS with 0.01% Thimerosal, 50% Glycerol, pH 7.3.
Isotype	IgG
Molecular Weight	Protein Mw: 32kDa Observed Mw: 35kDa
Storage Instruction	Store at -20°C for up to 1 year from the date of receipt, and avoid repeat freeze-thaw cycles.

TARGET INFORMATION

Gene ID	22924
Gene Symbol	MAPRE3
UniProt ID	MARE3_HUMAN
Immunogen Region	1-281
Immunogen Sequence	MAVNVYSTSVTSENLSRHDM LAWVNDLHLNYTKIEQLCS GAAYCQFMDMLFPGCVHLRK VKFQAKLEHEYIHNFKVLQA AFKKMGVDKIIIPVEKLVKGG FQDNFEFIQWFKKFFDANYD GKDYNPLLARQQDVAPPPN PGDQIFNKSKKLGITAVPQR TSPTGPKNMQTSGRLSNVAP PCILRKNPPSARNGGHETDA QILELNQQLVDLKLTVDGLK KERDFYFSKLRDIELICQE
Specificity	Recombinant fusion protein containing a sequence corresponding to amino acids 1-281 of human EB3/EB3/MAPRE3 (NP_036458.2).

ADDITIONAL INFORMATION

Note **STRICTLY FOR FURTHER SCIENTIFIC RESEARCH USE ONLY (RUO). MUST NOT TO BE USED IN DIAGNOSTIC OR THERAPEUTIC APPLICATIONS.**



Western blot analysis of various lysates using EB3/MAPRE3 Rabbit pAb (STJ113659) at 1:3000 dilution.

Secondary antibody: HRP-conjugated Goat anti-Rabbit IgG (H+L) (STJS000856) at 1:10000 dilution.

Lysates/proteins: 25 µg per lane.

Blocking buffer: 3% nonfat dry milk in TBST.

Detection: ECL Enhanced Kit

Exposure time: 90s.