

## Anti-SARDH antibody (300-560) (STJ113655)

### GENERAL INFORMATION

Product Type	Primary antibodies
Applications	WB/IF/ICC/ELISA
Host / Source	Rabbit
Reactivity	Mouse/Rat

### PRODUCT PROPERTIES

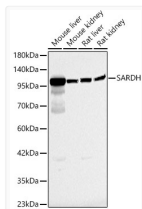
Clonality	Polyclonal
Concentration	Lot specific
Conjugation	Unconjugated
Purification	Affinity purification
Dilution Range	WB:1:500-1:2000 IF/CC:1:50-1:100 ELISA:Recommended starting concentration is 1 $\mu$ g/mL. Please optimize the concentration based on your specific assay requirements.
Formulation	PBS with 0.05% Proclin300, 50% Glycerol, pH 7.3.
Isotype	IgG
Molecular Weight	Protein Mw: 101kDa Observed Mw: 100kDa
Storage Instruction	Store at -20°C for up to 1 year from the date of receipt, and avoid repeat freeze-thaw cycles.

### TARGET INFORMATION

Gene ID	<a href="#">1757</a>
Gene Symbol	<a href="#">SARDH</a>
UniProt ID	<a href="#">SARDH_HUMAN</a>
Immunogen Region	300-560
Immunogen Sequence	RIEIQNMMPNVRDHDASVYL RLQGDALSVGGYEANPIFWE EVSDKFAGFLDLDWEVFTQ HIEGAINRVPVLEKTGIKST VCGPESFTPDHKPLMGEAPE LRGFFLGCGFNSAGMMLGGG CGQELAHWIIHGRPEKDMHG YDIRRFHHSLTDHPRWIRER SHESYAKNYSVVFPHDEPLA GRNMRDPLHEELLQGQCVF QERHGWERPWFHPRGPAPV LEYDYYGAYGSR AHEDYAY
Specificity	Recombinant fusion protein containing a sequence corresponding to amino acids 300-560 of human SARDH (NP_009032.2).

### ADDITIONAL INFORMATION

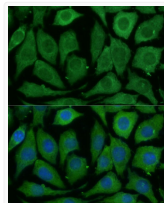
Note STRICTLY FOR FURTHER SCIENTIFIC RESEARCH USE ONLY (RUO). MUST NOT TO BE USED IN DIAGNOSTIC OR THERAPEUTIC APPLICATIONS.



Western blot analysis of various lysates, using SARDH Rabbit pAb (STJ113655) at 1:1000 dilution.

Secondary antibody: HRP-conjugated Goat anti-Rabbit IgG (H+L) (STJS000856) at 1:10000 dilution.

Lysates/proteins: 25  $\mu$ g per lane.  
Blocking buffer: 3% nonfat dry milk in TBST.  
Detection: ECL Basic Kit  
Exposure time: 40s.



Immunofluorescence analysis of L929 cells using SARDH Rabbit pAb (STJ113655) at dilution of 1:100 (40x lens). Secondary antibody: Cy3-conjugated Goat anti-Rabbit IgG (H+L) (STJS001166) at 1:500 dilution. Blue: DAPI for nuclear staining.