

## Anti-DEPTOR antibody (1-217) (STJ113643)

### GENERAL INFORMATION

Product Type	Primary antibodies
Applications	WB/ELISA
Host / Source	Rabbit
Reactivity	Human/Mouse

### PRODUCT PROPERTIES

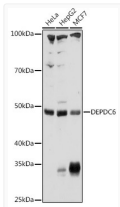
Clonality	Polyclonal
Concentration	Lot specific
Conjugation	Unconjugated
Purification	Affinity purification
Dilution Range	WB:1:500-1:2000 ELISA:Recommended starting concentration is 1 µg/mL. Please optimize the concentration based on your specific assay requirements.
Formulation	PBS with 0.01% Thimerosal, 50% Glycerol, pH 7.3.
Isotype	IgG
Molecular Weight	Protein Mw: 46kDa Observed Mw: 48kDa
Storage Instruction	Store at -20°C for up to 1 year from the date of receipt, and avoid repeat freeze-thaw cycles.

### TARGET INFORMATION

Gene ID	<a href="#">64798</a>
Gene Symbol	<a href="#">DEPTOR</a>
UniProt ID	<a href="#">DPTOR_HUMAN</a>
Immunogen Region	1-217
Immunogen Sequence	MEEGGSTGSAGSDSSTSGSG GAQORELERMAEVLVTGEQL RLRLHEEKVIKDRRHHLKTY PNCFVAKELIDWLIHKEAS DRETAIKLMQKLADRGIIHH VCDEHKEFKDVKLFYRFRKD DGTFFLDNEVKAFMRGQRLY EKLMSPEPTLLQPREEGVK YERTFMASEFLDWLVQEGEA TTRKEAEQLCHRLMEHGIQ HVSNNKHPFVDSNLLYQF
Specificity	Recombinant fusion protein containing a sequence corresponding to amino acids 1-217 of human DEPDC6 (NP_073620.2).

### ADDITIONAL INFORMATION

Note **STRICTLY FOR FURTHER SCIENTIFIC RESEARCH USE ONLY (RUO). MUST NOT TO BE USED IN DIAGNOSTIC OR THERAPEUTIC APPLICATIONS.**



Western blot analysis of various lysates using DEPDC6 Rabbit pAb (STJ113643) at 1:1000 dilution.

Secondary antibody: HRP-conjugated Goat anti-Rabbit IgG (H+L) (STJS000856) at 1:10000 dilution.

Lysates/proteins: 25 µg per lane.

Blocking buffer: 3% nonfat dry milk in TBST.

Detection: ECL Basic Kit

Exposure time: 60s.