

## Anti-RPSA antibody (1-295) (STJ113608)

### GENERAL INFORMATION

Product Type	Primary antibodies
Applications	WB/IF/ICC/ELISA
Host / Source	Rabbit
Reactivity	Human/Mouse/Rat

### PRODUCT PROPERTIES

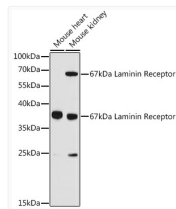
Clonality	Polyclonal
Concentration	Lot specific
Conjugation	Unconjugated
Purification	Affinity purification
Dilution Range	WB:1:1000-1:5000 IF/CC:1:50-1:200 ELISA:Recommended starting concentration is 1 $\mu$ g/mL. Please optimize the concentration based on your specific assay requirements.
Formulation	PBS with 0.01% Thimerosal, 50% Glycerol, pH 7.3.
Isotype	IgG
Molecular Weight	Protein Mw: 33kDa Observed Mw: 37kDa/67kDa
Storage Instruction	Store at -20°C for up to 1 year from the date of receipt, and avoid repeat freeze-thaw cycles.

### TARGET INFORMATION

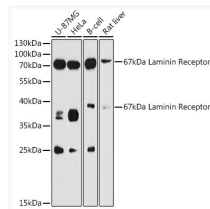
Gene ID	<a href="#">3921</a>
Gene Symbol	<a href="#">RPSA</a>
UniProt ID	<a href="#">RSSA_HUMAN</a>
Immunogen Region	1-295
Immunogen Sequence	MSGALDVLQMKEDVLKFLA AGTHLGGTNLDFQMEQYIYK RKSDGIYIINLKRTWEKLLL AARAIVAIENPADVSVISSR NTGQRAVLKFAAATGATPIA GRFTPGTFTNQIQAAFREPR LLVVTDPRAHQPLTEASYV NLPTIALCNTDSPLRYVDIA IPCNNKGAHSVGLMWWMLAR EVLRMRGTISRHPWEVMPD LYFYRDPEEIEKEEQAAAEK AVTKEEFQGEWTAPAPEFT
Specificity	Recombinant fusion protein containing a sequence corresponding to amino acids 1-295 of human 67kDa Laminin Receptor (NP_002286.2).

### ADDITIONAL INFORMATION

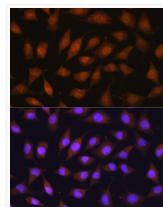
Note **STRICTLY FOR FURTHER SCIENTIFIC RESEARCH USE ONLY (RUO). MUST NOT TO BE USED IN DIAGNOSTIC OR THERAPEUTIC APPLICATIONS.**



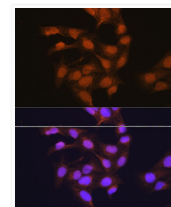
Western blot analysis of various lysates using 67kDa Laminin Receptor Rabbit pAb (STJ113608) at 1:3000 dilution.  
Secondary antibody: HRP-conjugated Goat anti-Rabbit IgG (H+L) (STJS000856) at 1:10000 dilution.  
Lysates/proteins: 25  $\mu$ g per lane.  
Blocking buffer: 3% nonfat dry milk in TBST.  
Detection: ECL Basic Kit  
Exposure time: 90s.



Western blot analysis of various lysates using 67kDa Laminin Receptor Rabbit pAb (STJ113608) at 1:3000 dilution.  
Secondary antibody: HRP-conjugated Goat anti-Rabbit IgG (H+L) (STJS000856) at 1:10000 dilution.  
Lysates/proteins: 25  $\mu$ g per lane.  
Blocking buffer: 3% nonfat dry milk in TBST.  
Detection: ECL Enhanced Kit  
Exposure time: 90s.



Immunofluorescence analysis of L929 cells using 67kDa Laminin Receptor Rabbit pAb (STJ113608) at dilution of 1:100 (40x lens). Secondary antibody: Cy3-conjugated Goat anti-Rabbit IgG (H+L) (STJS001166) at 1:500 dilution. Blue: DAPI for nuclear staining.



Immunofluorescence analysis of U-2 OS cells using 67kDa Laminin Receptor Rabbit pAb (STJ113608) at dilution of 1:100 (40x lens). Secondary antibody: Cy3-conjugated Goat anti-Rabbit IgG (H+L) (STJS001166) at 1:500 dilution. Blue: DAPI for nuclear staining.