

## Anti-ATG7 antibody (500-676) (STJ113569)

### GENERAL INFORMATION

Product Type	Primary antibodies
Applications	IHC-P/ELISA
Host / Source	Rabbit
Reactivity	Human

### PRODUCT PROPERTIES

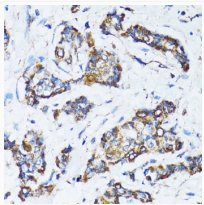
Clonality	Polyclonal
Concentration	Lot specific
Conjugation	Unconjugated
Purification	Affinity purification
Dilution Range	IHC-P:1:50-1:100 ELISA:Recommended starting concentration is 1 µg/mL. Please optimize the concentration based on your specific assay requirements.
Formulation	PBS with 0.02% Sodium Azide, 50% Glycerol, pH 7.3.
Isotype	IgG
Molecular Weight	Protein Mw: 78kDa Observed Mw:
Storage Instruction	Store at -20°C for up to 1 year from the date of receipt, and avoid repeat freeze-thaw cycles.

### TARGET INFORMATION

Gene ID	<a href="#">10533</a>
Gene Symbol	<a href="#">ATG7</a>
UniProt ID	<a href="#">ATG7_HUMAN</a>
Immunogen Region	500-676
Immunogen Sequence	LGFDTFVVMRHGLKPKKQQG AGDLCPNHPVASADLLGSSL FANIPGYKLGCFNDVVAP GDSTRDRTLDDQCTVSRPGL AVIAGALAVELMVSVLQHPE GGYAIASSDDRMNEPPTSL GLVPHQVLDQYEREGFNFLA KVFNSSHSFLEDLTGLTLH QETQAAEIWDMSDDETI
Specificity	Recombinant fusion protein containing a sequence corresponding to amino acids 500-676 of human ATG7 (NP_001129503.2).

### ADDITIONAL INFORMATION

Note **STRICTLY FOR FURTHER SCIENTIFIC RESEARCH USE ONLY (RUO). MUST NOT TO BE USED IN DIAGNOSTIC OR THERAPEUTIC APPLICATIONS.**



Immunohistochemistry analysis of paraffin-embedded human breast cancer using ATG7 antibody (STJ113569) at dilution of 1:100 (40x lens). Perform microwave antigen retrieval with 10 mM PBS buffer pH 7.2 before commencing with immunohistochemistry staining protocol.