

Anti-PPP1R12A antibody (1-200) (STJ113547)

GENERAL INFORMATION

Product Type	Primary antibodies
Applications	WB/IF/ICC/IP/ELISA
Host / Source	Rabbit
Reactivity	Human/Mouse/Rat

PRODUCT PROPERTIES

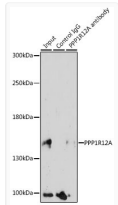
Clonality	Polyclonal
Concentration	Lot specific
Conjugation	Unconjugated
Purification	Affinity purification
Dilution Range	WB:1:500-1:2000 IF/CC:1:50-1:200 IP:0.5 Mu g-4 Mu g antibody for 200 Mu g-400 Mu g extracts of whole cells ELISA:Recommended starting concentration is 1 Mu g/mL. Please optimize the concentration based on your specific assay requirements
Formulation	PBS with 0.01% Thimerosal, 50% Glycerol, pH 7.3.
Isotype	IgG
Molecular Weight	Protein Mw: 115kDa Observed Mw: 140kDa
Storage Instruction	Store at -20°C for up to 1 year from the date of receipt, and avoid repeat freeze-thaw cycles.

TARGET INFORMATION

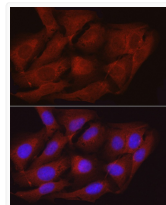
Gene ID	4659
Gene Symbol	PPP1R12A
UniProt ID	MYPT1_HUMAN
Immunogen Region	1-200
Immunogen Sequence	MKMADAKQKRNEQLKRWIGS ETDLEPPVVKRQKTKVKFDD GAVFLAACSSGDTDEVLKL HRGADINYNVDGLTALHQA CIDDNVDVMVKFLVENGANIN QPDNEGWIPLHAAASCGYLD IAEFLIGQGAHVGAVNSEGD TPLDIAEEEEAMEELLQNEVN RQGVDIEAARKEEERIMLRD ARQWLNSGHINDVRHAKSGG
Specificity	Recombinant fusion protein containing a sequence corresponding to amino acids 1-200 of human PPP1R12A (NP_002471.1).

ADDITIONAL INFORMATION

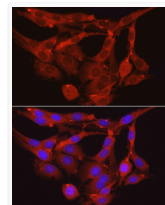
Note STRICTLY FOR FURTHER SCIENTIFIC RESEARCH USE ONLY (RUO). MUST NOT TO BE USED IN DIAGNOSTIC OR THERAPEUTIC APPLICATIONS.



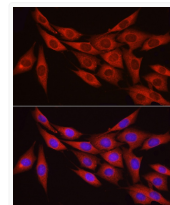
Immunoprecipitation analysis of 200 Mu g extracts of HeLa cells, using 3 Mu g PPP1R12A antibody (STJ113547). Western blot was performed from the immunoprecipitate using PPP1R12A antibody (STJ113547) at a dilution of 1:1000.



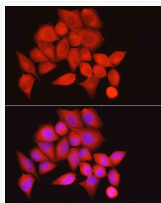
Immunofluorescence analysis of U2OS cells using PPP1R12A Rabbit polyclonal antibody (STJ113547) at dilution of 1:100 (40x lens). Secondary antibody: Cy3 Goat Anti-Rabbit IgG (H+L) at 1:500 dilution. Blue: DAPI for nuclear staining.



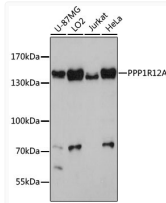
Immunofluorescence analysis of PC-12 cells using PPP1R12A Rabbit polyclonal antibody (STJ113547) at dilution of 1:100 (40x lens). Secondary antibody: Cy3 Goat Anti-Rabbit IgG (H+L) at 1:500 dilution. Blue: DAPI for nuclear staining.



Immunofluorescence analysis of NIH/3T3 cells using PPP1R12A Rabbit polyclonal antibody (STJ113547) at dilution of 1:100 (40x lens). Secondary antibody: Cy3 Goat Anti-Rabbit IgG (H+L) at 1:500 dilution. Blue: DAPI for nuclear staining.



Immunofluorescence analysis of HeLa cells using PPP1R12A Rabbit polyclonal antibody (STJ113547) at dilution of 1:100 (40x lens). Secondary antibody: Cy3 Goat Anti-Rabbit IgG (H+L) at 1:500 dilution. Blue: DAPI for nuclear staining.



Western blot analysis of various lysates using PPP1R12A Rabbit polyclonal antibody (STJ113547) at 1:3000 dilution. Secondary antibody: HRP Goat Anti-Rabbit IgG (H+L) (STJS000856) at 1:10000 dilution. Lysates/proteins: 25 Mu g per lane. Blocking buffer: 3% nonfat dry milk in TBST. Detection: ECL Basic Kit. Exposure time: 90s.