

Anti-CDK2 antibody (200-298) (STJ113540)

GENERAL INFORMATION

Product Type	Primary antibodies
Applications	WB/IHC-P/ELISA
Host / Source	Rabbit
Reactivity	Human/Mouse/Rat

PRODUCT PROPERTIES

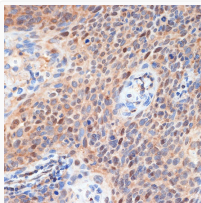
Clonality	Polyclonal
Concentration	Lot specific
Conjugation	Unconjugated
Purification	Affinity purification
Dilution Range	WB:1:500-1:1000 IHC-P:1:50-1:200 ELISA:Recommended starting concentration is 1 Mu g/mL. Please optimize the concentration based on your specific assay requirements.
Formulation	PBS with 0.01% Thimerosal, 50% Glycerol, pH 7.3.
Isotype	IgG
Molecular Weight	Protein Mw: 34kDa Observed Mw: 34kDa
Storage Instruction	Store at -20°C for up to 1 year from the date of receipt, and avoid repeat freeze-thaw cycles.

TARGET INFORMATION

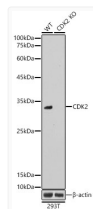
Gene ID	1017
Gene Symbol	CDK2
UniProt ID	CDK2_HUMAN
Immunogen Region	200-298
Immunogen Sequence	RALFPGDSEIDQLFRIFRTL GTPDEVVWPGVTSMPDYKPS FPKWARQDFSKVVPPLDEDG RSLLSQMLHYDPNKRISAKA ALAHPFFQDVTKPVPHRLR
Specificity	A synthetic peptide corresponding to a sequence within amino acids 200-298 of human CDK2 (NP_001789.2).

ADDITIONAL INFORMATION

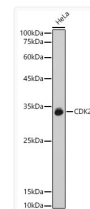
Note **STRICTLY FOR FURTHER SCIENTIFIC RESEARCH USE ONLY (RUO). MUST NOT TO BE USED IN DIAGNOSTIC OR THERAPEUTIC APPLICATIONS.**



Immunohistochemistry analysis of CDK2 in paraffin-embedded human esophageal cancer using [KO Validated] CDK2 Rabbit polyclonal antibody (STJ113540) at dilution of 1:100 (40x lens). Perform microwave antigen retrieval with 10 mM Tris/EDTA buffer pH 9.0 before commencing with immunohistochemistry staining protocol.



Western blot analysis of lysates from wild type (WT) and CDK2 knockout (KO) 293T cells, using [KO Validated] CDK2 Rabbit polyclonal antibody (STJ113540) at 1:1000 dilution. Secondary antibody: HRP Goat Anti-Rabbit IgG (H+L) (STJS000856) at 1:10000 dilution. Lysates/proteins: 25 Mu g per lane. Blocking buffer: 3% nonfat dry milk in TBST. Detection: ECL Basic Kit. Exposure time: 10s.



Western blot analysis of lysates from HeLa cells, using [KO Validated] CDK2 Rabbit polyclonal antibody (STJ113540) at 1:1000 dilution. Secondary antibody: HRP Goat Anti-Rabbit IgG (H+L) (STJS000856) at 1:10000 dilution. Lysates/proteins: 25 Mu g per lane. Blocking buffer: 3% nonfat dry milk in TBST. Detection: ECL Enhanced Kit. Exposure time: 10s.