

Anti-ACTB antibody [S2MR] (STJ113532)

GENERAL INFORMATION

Product Type	Primary antibodies
Applications	WB/IHC-P/ELISA
Host / Source	Rabbit
Reactivity	Human/Mouse/Rat/Chicken/Zebrafish/Pig

PRODUCT PROPERTIES

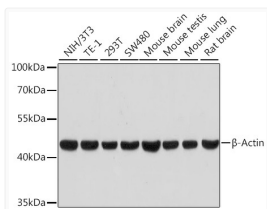
Clonality	Monoclonal
Concentration	Lot specific
Conjugation	Unconjugated
Purification	Affinity purification
Dilution Range	WB:1:80000-1:640000 IHC-P:1:100-1:500 ELISA:Recommended starting concentration is 1 Mu g/mL. Please optimize the concentration based on your specific assay requirements.
Formulation	PBS with 0.05% Proclin300, 0.05% BSA, 50% Glycerol, pH 7.3.
Isotype	IgG
Molecular Weight	Protein Mw: 42kDa Observed Mw: 42kDa
Storage Instruction	Store at -20°C for up to 1 year from the date of receipt, and avoid repeat freeze-thaw cycles.

TARGET INFORMATION

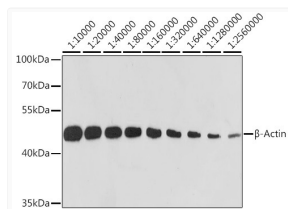
Gene ID	60
Gene Symbol	ACTB
UniProt ID	ACTB_HUMAN
Immunogen Sequence	MDDDIAALVVDNGSGMCKAG FAGDDAPRAVFPISIVGRPRH QGVMVGMGQKDSYVGDEAQS KRGILTLKYPHIEHGIVTNWD DMEKIWHHTFYNELRVAPEE HPVLLTEAPLNPKANREKMT QIMFETNTPAMYVAIQAVL SLYASGRRTGIVMDSGDGVT HTVPIYEGYALPHAILRLDL AGRDLTDYLMKILTERGYSF TTTAEREIVRDIKEKLCYVA LDFEQEMATAASSSSSLEKS
Specificity	Recombinant protein of human Beta-actin

ADDITIONAL INFORMATION

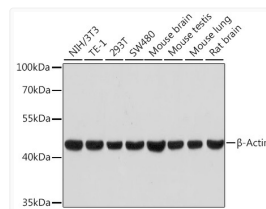
Note **STRICTLY FOR FURTHER SCIENTIFIC RESEARCH USE ONLY (RUO). MUST NOT TO BE USED IN DIAGNOSTIC OR THERAPEUTIC APPLICATIONS.**



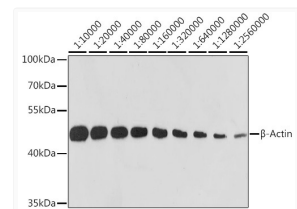
Western blot analysis of various lysates using Beta-Actin Rabbit mAb (High Dilution) (STJ113532) at 1:100000 dilution. Secondary antibody: HRP-conjugated Goat anti-Rabbit IgG (H+L) (STJS000856) at 1:10000 dilution. Lysates/proteins: 25 Mu g per lane. Blocking buffer: 3% nonfat dry milk in TBST. Detection: ECL Basic Kit Exposure time: 30s.



Western blot analysis of lysates from HeLa cells, using Beta-Actin Rabbit mAb (High Dilution) (STJ113532) at 1:10000-1:2560000 dilution. Secondary antibody: HRP-conjugated Goat anti-Rabbit IgG (H+L) (STJS000856) at 1:10000 dilution. Lysates/proteins: 25 Mu g per lane. Blocking buffer: 3% nonfat dry milk in TBST. Detection: ECL Basic Kit Exposure time: 10s.



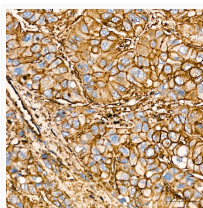
Western blot analysis of various lysates using β -Actin Rabbit mAb (High Dilution) (STJ113532) at 1:100000 dilution. Secondary antibody: HRP-conjugated Goat anti-Rabbit IgG (H+L) (STJS000856) at 1:10000 dilution. Lysates/proteins: 25 Mu g per lane. Blocking buffer: 3% nonfat dry milk in TBST. Detection: ECL Basic Kit Exposure time: 30s.



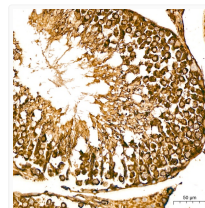
Western blot analysis of lysates from HeLa cells, using β -Actin Rabbit mAb (High Dilution) (STJ113532) at 1:10000-1:2560000 dilution. Secondary antibody: HRP-conjugated Goat anti-Rabbit IgG (H+L) (STJS000856) at 1:10000 dilution. Lysates/proteins: 25 Mu g per lane. Blocking buffer: 3% nonfat dry milk in TBST. Detection: ECL Basic Kit Exposure time: 10s.



Immunohistochemistry analysis of paraffin-embedded Mouse intestine tissue using β -Actin Rabbit mAb (High Dilution) (STJ113532) at a dilution of 1:400 (40x lens). High pressure antigen retrieval performed with 0.01M Citrate Buffer (pH 6.0) prior to immunohistochemistry staining.



Immunohistochemistry analysis of paraffin-embedded Human liver cancer tissue using β -Actin Rabbit mAb (High Dilution) (STJ113532) at a dilution of 1:400 (40x lens). High pressure antigen retrieval performed with 0.01M Citrate Buffer (pH 6.0) prior to immunohistochemistry staining.



Immunohistochemistry analysis of paraffin-embedded Rat testis tissue using β -Actin Rabbit mAb (High Dilution) (STJ113532) at a dilution of 1:400 (40x lens). High pressure antigen retrieval performed with 0.01M Citrate Buffer (pH 6.0) prior to immunohistochemistry staining.