

## Anti-Phospho-PRKDC-S2056 antibody (STJ113503)

### GENERAL INFORMATION

|               |                       |
|---------------|-----------------------|
| Product Type  | Primary antibodies    |
| Applications  | WB/IHC-P/IF/ICC/ELISA |
| Host / Source | Rabbit                |
| Reactivity    | Human                 |

### PRODUCT PROPERTIES

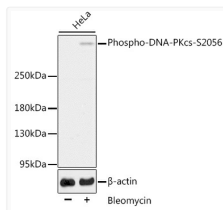
|                     |   |
|---------------------|---|
| Clonality           | Polyclonal  |
| Concentration       | Lot specific  |
| Conjugation         | Unconjugated  |
| Purification        | Affinity purification   |
| Dilution Range      | WB:1:500-1:2000<br>IHC-P:1:100-1:500<br>IF/CC:1:50-1:200<br>ELISA:Recommended starting concentration is 1 µg/mL. Please optimize the concentration based on your specific assay requirements. |
| Formulation         | PBS with 0.02% Sodium Azide, 50% Glycerol, pH7.3.   |
| Isotype             | IgG   |
| Molecular Weight    | Protein Mw: 469kDa<br>Observed Mw: 469kDa   |
| Storage Instruction | Store at -20°C for up to 1 year from the date of receipt, and avoid repeat freeze-thaw cycles.  |

### TARGET INFORMATION

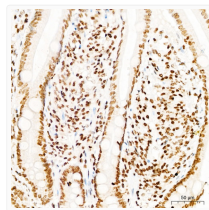
|                    |  |
|--------------------|--|
| Gene ID            | <a href="#">5591</a>   |
| Gene Symbol        | <a href="#">PRKDC</a>  |
| UniProt ID         | <a href="#">PRKDC_HUMAN</a>  |
| Immunogen Sequence | YSSQDP   |
| Specificity        | A synthetic phosphorylated peptide around S2056 of human DNA-PKcs (NP_008835.5). |

### ADDITIONAL INFORMATION

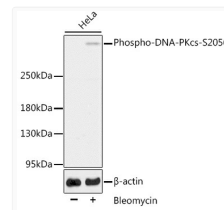
Note **STRICTLY FOR FURTHER SCIENTIFIC RESEARCH USE ONLY (RUO). MUST NOT TO BE USED IN DIAGNOSTIC OR THERAPEUTIC APPLICATIONS.**



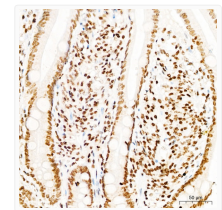
Western blot analysis of lysates from HeLa cells, using Phospho-DNA-PKcs-S2056 Rabbit pAb (STJ113503). Secondary antibody: HRP-conjugated Goat anti-Rabbit IgG (H+L) (STJS000856) at 1:10000 dilution. Lysates/proteins: 25 µg per lane. Blocking buffer: 3% BSA.



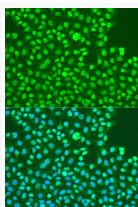
Immunohistochemistry analysis of paraffin-embedded Human small intestine tissue using Phospho-DNA-PKcs-S2056 Rabbit pAb (STJ113503) at a dilution of 1:300 (40x lens). High pressure antigen retrieval was performed with 0.01 M citrate buffer (pH 6.0) prior to immunohistochemistry staining.



Western blot analysis of lysates from HeLa cells, using Phospho-DNA-PKcs-S2056 Rabbit pAb (STJ113503). Secondary antibody: HRP-conjugated Goat anti-Rabbit IgG (H+L) (STJS000856) at 1:10000 dilution. Lysates/proteins: 25 µg per lane. Blocking buffer: 3% BSA.



Immunohistochemistry analysis of paraffin-embedded Human small intestine tissue using Phospho-DNA-PKcs-S2056 Rabbit pAb (STJ113503) at a dilution of 1:300 (40x lens). High pressure antigen retrieval was performed with 0.01 M citrate buffer (pH 6.0) prior to immunohistochemistry staining.



Immunofluorescence analysis of U2OS cells using Phospho-DNA-PKcs-S2056 Rabbit pAb (STJ113503) at dilution of 1:100. Secondary antibody: Cy3-conjugated Goat anti-Rabbit IgG (H+L) (STJS001166) at 1:500 dilution. Blue: DAPI for nuclear staining.