

## Anti-Phospho-RPS6-S240/244 antibody (STJ113488)

### GENERAL INFORMATION

Product Type	Primary antibodies
Applications	WB/IHC-P/IP/ELISA
Host / Source	Rabbit
Reactivity	Human/Mouse/Rat

### PRODUCT PROPERTIES

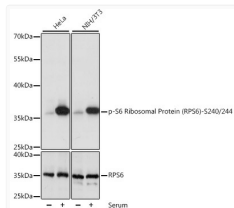
Clonality	Polyclonal
Concentration	Lot specific
Conjugation	Unconjugated
Purification	Affinity purification
Dilution Range	WB:1:500-1:2000 IHC-P:1:50-1:200 IP:0.5 Mu g-4 Mu g antibody for 200 Mu g-400 Mu g extracts of whole cells ELISA:Recommended starting concentration is 1 Mu g/mL. Please optimize the concentration based on your specific assay requirements.
Formulation	PBS with 0.02% Sodium Azide, 50% Glycerol, pH 7.3.
Isotype	IgG
Molecular Weight	Protein Mw: 29kDa Observed Mw: 36kDa
Storage Instruction	Store at -20°C for up to 1 year from the date of receipt, and avoid repeat freeze-thaw cycles.

### TARGET INFORMATION

Gene ID	<a href="#">6194</a>
Gene Symbol	<a href="#">RPS6</a>
UniProt ID	<a href="#">RS6_HUMAN</a>
Immunogen Sequence	STSKS
Specificity	A synthetic phosphorylated peptide around S240 & S244 of human RPS6 (NP_001001.2).

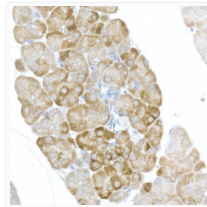
### ADDITIONAL INFORMATION

Note **STRICTLY FOR FURTHER SCIENTIFIC RESEARCH USE ONLY (RUO). MUST NOT TO BE USED IN DIAGNOSTIC OR THERAPEUTIC APPLICATIONS.**

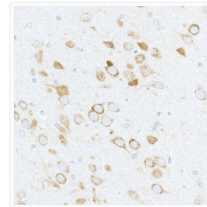


Western blot analysis of various lysates using Phospho-S6 Ribosomal Protein (RPS6) - S240/244 Rabbit pAb (STJ113488) at 1:1000 dilution or RPS6 antibody (STJ27852). HeLa and NIH/3T3 cells were treated by 10% FBS at 37 °C for 30 minutes after serum-starvation overnight. Secondary antibody: HRP-conjugated Goat anti-Rabbit IgG (H+L) (STJS000856) at 1:10000 dilution.

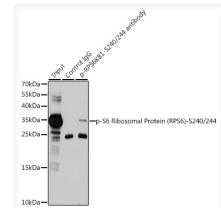
Lysates/proteins: 25 Mu g per lane.  
Blocking buffer: 3% BSA.  
Detection: ECL Basic Kit  
Exposure time: 1s.



Immunohistochemistry analysis of paraffin-embedded Mouse pancreas using Phospho-S6 Ribosomal Protein (RPS6) -S240/244 Rabbit pAb (STJ113488) at dilution of 1:50 (40x lens). High pressure antigen retrieval performed with 0.01M Citrate Bufferr (pH 6.0) prior to immunohistochemistry staining.



Immunohistochemistry analysis of paraffin-embedded Rat brain using Phospho-S6 Ribosomal Protein (RPS6) -S240/244 Rabbit pAb (STJ113488) at dilution of 1:50 (40x lens). High pressure antigen retrieval performed with 0.01M Citrate Bufferr (pH 6.0) prior to immunohistochemistry staining.



Immunoprecipitation analysis of 200 Mu g extracts of 293T cells, using 3 Mu g Phospho-S6 Ribosomal Protein (RPS6) -S240/244 pAb (STJ113488). Western blot was performed from the immunoprecipitate using Phospho-RPS6-S240/244 pAb (STJ113488) at a dilution of 1:1000. 293T cells were treated by PMA/TPA (200 nM) at 37 °C for 30 minutes after serum-starvation overnight.