

## Anti-Phospho-RAF1-S259 antibody (STJ113482)

### GENERAL INFORMATION

Product Type	Primary antibodies
Applications	WB/IP/ELISA
Host / Source	Rabbit
Reactivity	Human

### PRODUCT PROPERTIES

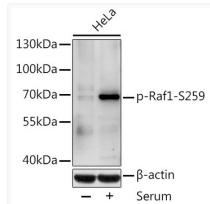
Clonality	Polyclonal
Concentration	Lot specific
Conjugation	Unconjugated
Purification	Affinity purification
Dilution Range	WB:1:500-1:2000 IP:0.5 Mu g-4 Mu g antibody for 200 Mu g-400 Mu g extracts of whole cells ELISA:Recommended starting concentration is 1 Mu g/mL. Please optimize the concentration based on your specific assay requirements.
Formulation	PBS with 0.02% Sodium Azide, 50% Glycerol, pH 7.3.
Isotype	IgG
Molecular Weight	Protein Mw: 73kDa Observed Mw: 73kDa
Storage Instruction	Store at -20°C for up to 1 year from the date of receipt, and avoid repeat freeze-thaw cycles.

### TARGET INFORMATION

Gene ID	<a href="#">5894</a>
Gene Symbol	<a href="#">RAF1</a>
UniProt ID	<a href="#">RAF1_HUMAN</a>
Immunogen Sequence	STSTP
Specificity	A synthetic phosphorylated peptide around S259 of human Phospho-Raf1-S259 (NP_002871.1).

### ADDITIONAL INFORMATION

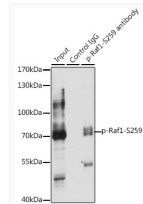
Note **STRICTLY FOR FURTHER SCIENTIFIC RESEARCH USE ONLY (RUO). MUST NOT TO BE USED IN DIAGNOSTIC OR THERAPEUTIC APPLICATIONS.**



Western blot analysis of lysates from HeLa cells, using Phospho-Raf1-S259 Rabbit pAb (STJ113482) at 1:1000 dilution. HeLa cells were treated by 10% FBS after serum-starvation overnight.

Secondary antibody: HRP-conjugated Goat anti-Rabbit IgG (H+L) (STJS000856) at 1:10000 dilution.

Lysates/proteins: 25 Mu g per lane.  
Blocking buffer: 3% BSA.



Immunoprecipitation analysis of 200 Mu g extracts of HeLa cells, using 3 Mu g Phospho-Raf1-S259 pAb (STJ113482). Western blot was performed from the immunoprecipitate using Phospho-Raf1-S259 pAb (STJ113482) at a dilution of 1:1000. HeLa cells were treated by 10% FBS at 37 °C for 30 minutes after serum-starvation overnight.