

## Anti-AANAT antibody (1-207) (STJ113429)

### GENERAL INFORMATION

Product Type	Primary antibodies
Applications	WB/ELISA
Host / Source	Rabbit
Reactivity	Human

### PRODUCT PROPERTIES

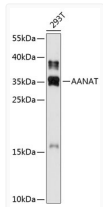
Clonality	Polyclonal
Concentration	Lot specific
Conjugation	Unconjugated
Purification	Affinity purification
Dilution Range	WB:1:500-1:1000 ELISA:Recommended starting concentration is 1 µg/mL. Please optimize the concentration based on your specific assay requirements.
Formulation	PBS with 0.02% Sodium Azide, 50% Glycerol, pH 7.3.
Isotype	IgG
Molecular Weight	Protein Mw: 23kDa Observed Mw: 35kDa
Storage Instruction	Store at -20°C for up to 1 year from the date of receipt, and avoid repeat freeze-thaw cycles.

### TARGET INFORMATION

Gene ID	<a href="#">15</a>
Gene Symbol	<a href="#">AANAT</a>
UniProt ID	<a href="#">SNAT_HUMAN</a>
Immunogen Region	1-207
Immunogen Sequence	MSTQSTHPLKPEAPRLPPGI PESPCQRRHTLPASEFRCL TPEDAVSAFEIEREAFISVL GVCPLYLDEIRHFLTLCPEL SLGWFEEGCLVAFIIGSLWD KERLMQESLTLHRSGGHIAH LHVLAVHRAFRQQGRGPILL WRYLHHLGSQLPAVRRRAALMC EDALVPFYERFSFHAVGPCA ITVGSILTFMELHCSLRGHPF LRRNSGC
Specificity	Recombinant fusion protein containing a sequence corresponding to amino acids 1-207 of human AANAT (NP_001079.1).

### ADDITIONAL INFORMATION

Note **STRICTLY FOR FURTHER SCIENTIFIC RESEARCH USE ONLY (RUO). MUST NOT TO BE USED IN DIAGNOSTIC OR THERAPEUTIC APPLICATIONS.**



Western blot analysis of lysates from 293T cells, using AANAT Rabbit polyclonal antibody (STJ113429) at 1:1000 dilution. Secondary antibody: HRP Goat Anti-Rabbit IgG (H+L) (STJS00856) at 1:10000 dilution. Lysates/proteins: 25 µg per lane. Blocking buffer: 3% nonfat dry milk in TBST. Detection: ECL Enhanced Kit. Exposure time: 90s.