

Anti-TGFBR2 antibody (23-567) (STJ113371)

GENERAL INFORMATION

Product Type	Primary antibodies
Applications	WB/IHC-P/IF/ICC/ELISA
Host / Source	Rabbit
Reactivity	Human/Mouse/Rat

PRODUCT PROPERTIES

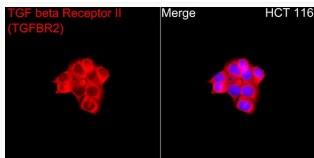
Clonality	Polyclonal
Concentration	Lot specific
Conjugation	Unconjugated
Purification	Affinity purification
Dilution Range	WB:1:500-1:1000 IHC-P:1:50-1:200 IF/CC:1:50-1:200 ELISA:Recommended starting concentration is 1 Mu g/mL. Please optimize the concentration based on your specific assay requirements.
Formulation	PBS with 0.05% Proclin300, 50% Glycerol, pH 7.3.
Isotype	IgG
Molecular Weight	Protein Mw: 65kDa Observed Mw: 65-80kDa
Storage Instruction	Store at -20°C for up to 1 year from the date of receipt, and avoid repeat freeze-thaw cycles.

TARGET INFORMATION

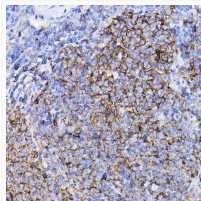
Gene ID	7048
Gene Symbol	TGFBFR2
UniProt ID	TGFR2_HUMAN
Immunogen Region	23-567
Immunogen Sequence	TIPPHVQKSVNNDMIVTDNN GAVKFPQLCKFCDVRFSTCD NQKSCMSNCSITSICEKPGQ VCVAVWRKNDENITLTVCH DPKLPYHDFILEDAAAPKCI MKEKKKPGETFFMCSCSSDE CNDNIIFSEEYNTSNPDL LL VIFQVTGISLLPPLGV AISV IIFCYRVNRQQLSSTWE TGKTRKLMFSEHCAILED DRSDISSTCANNINHNTELL PIELDTLVVGKGRFAEVYKA
Specificity	Recombinant fusion protein containing a sequence corresponding to amino acids 23-280 of human TGF beta Receptor II (TGFBFR2) (NP_003233.4).

ADDITIONAL INFORMATION

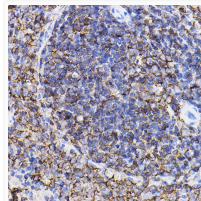
Note STRICTLY FOR FURTHER SCIENTIFIC RESEARCH USE ONLY (RUO). MUST NOT TO BE USED IN DIAGNOSTIC OR THERAPEUTIC APPLICATIONS.



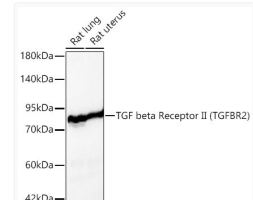
Immunofluorescence analysis of HCT 116 cells using TGF beta Receptor II (TGFBFR2) Rabbit polyclonal antibody (STJ113371) at a dilution of 1:200 (40x lens). Secondary antibody: Cy3 Goat Anti-Rabbit IgG (H+L) at 1:500 dilution. Blue: DAPI for nuclear staining.



Immunohistochemistry analysis of TGF beta Receptor II (TGFBFR2) in paraffin-embedded mouse spleen using TGF beta Receptor II (TGF beta Receptor II (TGFBFR2)) Rabbit polyclonal antibody (STJ113371) at dilution of 1:100 (40x lens). Perform high pressure antigen retrieval with 10 mM citrate buffer pH 6. 0 before commencing with immunohistochemistry staining protocol.



Immunohistochemistry analysis of TGF beta Receptor II (TGFBFR2) in paraffin-embedded rat spleen using TGF beta Receptor II (TGF beta Receptor II (TGFBFR2)) Rabbit polyclonal antibody (STJ113371) at dilution of 1:100 (40x lens). Perform high pressure antigen retrieval with 10 mM citrate buffer pH 6. 0 before commencing with immunohistochemistry staining protocol.



Western blot analysis of various lysates using TGF beta Receptor II (TGFBFR2) Rabbit polyclonal antibody (STJ113371) at 1:1000 dilution. Secondary antibody: HRP Goat Anti-Rabbit IgG (H+L) (STJS000856) at 1:10000 dilution. Lysates/ proteins: 25 Mu g per lane. Blocking buffer: 3 % nonfat dry milk in TBST. Detection: ECL Basic Kit. Exposure time: 30s.