

Anti-CAT antibody (1-225) (STJ113361)

GENERAL INFORMATION

Product Type	Primary antibodies
Applications	WB/IHC-P/IF/ICC/ELISA
Host / Source	Rabbit
Reactivity	Human/Mouse/Rat

PRODUCT PROPERTIES

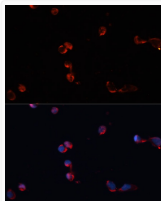
Clonality	Polyclonal
Concentration	Lot specific
Conjugation	Unconjugated
Purification	Affinity purification
Dilution Range	WB:1:500-1:2000 IHC-P:1:50-1:100 IF/ICC:1:50-1:100 ELISA:Recommended starting concentration is 1 Mu g/mL. Please optimize the concentration based on your specific assay requirements.
Formulation	PBS with 0.01% Thimerosal, 50% Glycerol, pH 7.3.
Isotype	IgG
Molecular Weight	Protein Mw: 60kDa Observed Mw: 60kDa
Storage Instruction	Store at -20°C for up to 1 year from the date of receipt, and avoid repeat freeze-thaw cycles.

TARGET INFORMATION

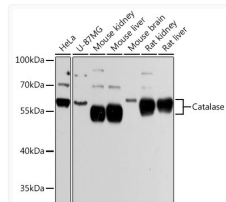
Gene ID	847
Gene Symbol	CAT
UniProt ID	CATA_HUMAN
Immunogen Region	1-225
Immunogen Sequence	MADSRDPASDQMQHWEQRA AQKADVLTTGAGNPVGDKLN VITVGPGRGPLLVQDVVFTDE MAHFDREIRIPERVVHAKGAG AFGYFEVTHDITKYSKAKVF EHIGKKTPIAVRFSTVAGES GSADTVRDPGRGFAVKFYTED GNWDLVGNNTPIFFIRDPII FPSFIHSQKRNPQTHLKDPD MVWDFWLSLRPESLHQVSFLF SDRGIPDGHHRMNGYGSHTF KLVNA
Specificity	Recombinant fusion protein containing a sequence corresponding to amino acids 1-225 of human Catalase (NP_001743.1).

ADDITIONAL INFORMATION

Note STRICTLY FOR FURTHER SCIENTIFIC RESEARCH USE ONLY (RUO). MUST NOT TO BE USED IN DIAGNOSTIC OR THERAPEUTIC APPLICATIONS.



Immunofluorescence analysis of HeLa cells using Catalase Rabbit polyclonal antibody (STJ113361) at dilution of 1:100. Secondary antibody: Cy3 Goat Anti-Rabbit IgG (H+L) at 1:500 dilution. Blue: DAPI for nuclear staining.



Western blot analysis of various lysates using Catalase Rabbit polyclonal antibody (STJ113361) at 1:3000 dilution. Secondary antibody: HRP Goat Anti-Rabbit IgG (H+L) (STJS000856) at 1:10000 dilution. Lysates/proteins: 25 Mu g per lane. Blocking buffer: 3% nonfat dry milk in TBST. Detection: ECL Basic Kit. Exposure time: 5s.