

Anti-ITPRIP antibody (101-290) (STJ113323)

GENERAL INFORMATION

Product Type	Primary antibodies
Applications	WB/IF/ICC/ELISA
Host / Source	Rabbit
Reactivity	Human

PRODUCT PROPERTIES

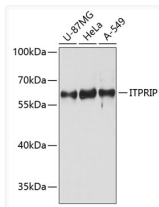
Clonality	Polyclonal
Concentration	Lot specific
Conjugation	Unconjugated
Purification	Affinity purification
Dilution Range	WB:1:500-1:2000 IF/CC:1:50-1:200 ELISA:Recommended starting concentration is 1 Mu g/mL. Please optimize the concentration based on your specific assay requirements.
Formulation	PBS with 0.01% Thimerosal, 50% Glycerol, pH 7.3.
Isotype	IgG
Molecular Weight	Protein Mw: 62kDa Observed Mw: 62kDa
Storage Instruction	Store at -20°C for up to 1 year from the date of receipt, and avoid repeat freeze-thaw cycles.

TARGET INFORMATION

Gene ID	85450
Gene Symbol	ITPRIP
UniProt ID	IPRI_HUMAN
Immunogen Region	101-290
Immunogen Sequence	EVWRQDHQEGPSPECLGGEE DELPGLGGAPLQGLTLPNKA TLGHFYERCIRGATADAART REFLEGFVDDLLEALRSLCN RDTDMEVEDFIGVDSMYENW QVDRPLLCHLFVPTPEPEY RFHPELWCSGRSVPLDRQGY GQIKVVRADGDTLSCICGKT KLGEDMLCLLHGRNSMAPPK GDMENLLCAT
Specificity	Recombinant fusion protein containing a sequence corresponding to amino acids 101-290 of human ITPRIP (NP_203755.1).

ADDITIONAL INFORMATION

Note **STRICTLY FOR FURTHER SCIENTIFIC RESEARCH USE ONLY (RUO). MUST NOT TO BE USED IN DIAGNOSTIC OR THERAPEUTIC APPLICATIONS.**



Western blot analysis of various lysates using ITPRIP Rabbit polyclonal antibody (STJ113323) at 1:3000 dilution. Secondary antibody: HRP Goat Anti-Rabbit IgG (H+L) (STJS000856) at 1:10000 dilution. Lysates/proteins: 25 Mu g per lane. Blocking buffer: 3% nonfat dry milk in TBST. Detection: ECL Basic Kit. Exposure time: 30s.