

## Anti-RPS18 antibody (1-152) (STJ113287)

### GENERAL INFORMATION

Product Type	Primary antibodies
Applications	WB/IHC-P/IF/ICC/ELISA
Host / Source	Rabbit
Reactivity	Human/Mouse/Rat

### PRODUCT PROPERTIES

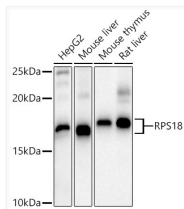
Clonality	Polyclonal
Concentration	Lot specific
Conjugation	Unconjugated
Purification	Affinity purification
Dilution Range	WB:1:500-1:1000 IHC-P:1:50-1:200 IF/ICC:1:50-1:200 ELISA:Recommended starting concentration is 1 Mu g/mL. Please optimize the concentration based on your specific assay requirements.
Formulation	PBS with 0.05% Proclin300, 50% Glycerol, pH 7.3.
Isotype	IgG
Molecular Weight	Protein Mw: 18kDa Observed Mw: 18kDa
Storage Instruction	Store at -20°C for up to 1 year from the date of receipt, and avoid repeat freeze-thaw cycles.

### TARGET INFORMATION

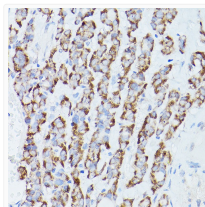
Gene ID	<a href="#">6222</a>
Gene Symbol	<a href="#">RPS18</a>
UniProt ID	<a href="#">RS18_HUMAN</a>
Immunogen Region	1-152
Immunogen Sequence	MSLVIPEKFQHILRVLNTNI DGRRKIAFAITAIGVGRRY AHVVLKADIDLTKRAGELT EDEVERVITIMQNPRQYKIP DWFLNRQKDVKDGKYSQVLA NGLDNKLRDLERLKKIRAH RGLRHFHWGLRVRGQHTKTTG RRGRTVGVSKKK
Specificity	Recombinant fusion protein containing a sequence corresponding to amino acids 1-152 of human RPS18 (NP_072045.1).

### ADDITIONAL INFORMATION

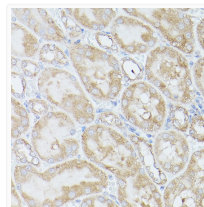
Note STRICTLY FOR FURTHER SCIENTIFIC RESEARCH USE ONLY (RUO). MUST NOT TO BE USED IN DIAGNOSTIC OR THERAPEUTIC APPLICATIONS.



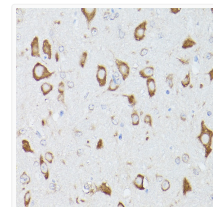
Western blot analysis of extracts of various cell lines, using RPS18 antibody (STJ113287) at 1:1000 dilution. Secondary antibody: HRP Goat Anti-rabbit IgG (H+L) (STJS000856) at 1:10000 dilution. Lysates/proteins: 25 Mu g per lane. Blocking buffer: 3% non-fat dry milk in TBST. Detection: ECL Basic Kit. Exposure time: 30s.



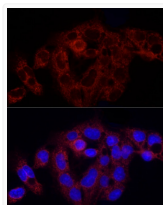
Immunohistochemistry analysis of paraffin-embedded Human thyroid cancer using RPS18 antibody (STJ113287) at dilution of 1:100 (40x lens). Perform high pressure antigen retrieval with 10 mM citrate buffer pH 6. 0 before commencing with immunohistochemistry staining protocol.



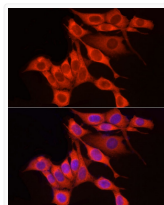
Immunohistochemistry analysis of paraffin-embedded mouse kidney using RPS18 antibody (STJ113287) at dilution of 1:100 (40x lens). Perform high pressure antigen retrieval with 10 mM citrate buffer pH 6. 0 before commencing with immunohistochemistry staining protocol.



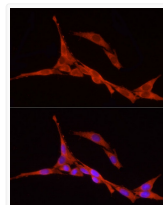
Immunohistochemistry analysis of paraffin-embedded Rat brain using RPS18 antibody (STJ113287) at dilution of 1:100 (40x lens). Perform high pressure antigen retrieval with 10 mM citrate buffer pH 6. 0 before commencing with immunohistochemistry staining protocol.



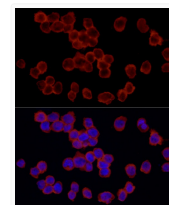
Immunofluorescence analysis of HepG2 cells using RPS18 rabbit polyclonal antibody (STJ113287) at dilution of 1:200 (40x lens). Blue: DAPI for nuclear staining.



Immunofluorescence analysis of NIH/3T3 cells using RPS18 rabbit polyclonal antibody (STJ113287) at dilution of 1:200 (40x lens). Blue: DAPI for nuclear staining.



Immunofluorescence analysis of PC-12 cells using RPS18 rabbit polyclonal antibody (STJ113287) at dilution of 1:200 (40x lens). Blue: DAPI for nuclear staining.



Immunofluorescence analysis of THP-1 cells using RPS18 rabbit polyclonal antibody (STJ113287) at dilution of 1:200 (40x lens). Blue: DAPI for nuclear staining.