

Anti-ACSL3 antibody (652-672) (STJ113279)

GENERAL INFORMATION

Product Type	Primary antibodies
Applications	WB/IHC-P/ELISA
Host / Source	Rabbit
Reactivity	Human/Mouse/Rat

PRODUCT PROPERTIES

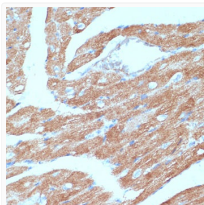
Clonality	Polyclonal
Concentration	Lot specific
Conjugation	Unconjugated
Purification	Affinity purification
Dilution Range	WB:1:500-1:1000 IHC-P:1:50-1:200 ELISA:Recommended starting concentration is 1 µg/mL. Please optimize the concentration based on your specific assay requirements.
Formulation	PBS with 0.05% Proclin300, 50% Glycerol, pH 7.3.
Isotype	IgG
Molecular Weight	Protein Mw: 80kDa Observed Mw: 76kDa
Storage Instruction	Store at -20°C for up to 1 year from the date of receipt, and avoid repeat freeze-thaw cycles.

TARGET INFORMATION

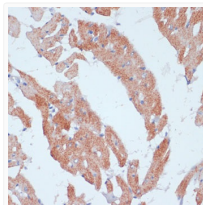
Gene ID	2181
Gene Symbol	ACSL3
UniProt ID	ACSL3_HUMAN
Immunogen Region	652-672
Immunogen Sequence	VIGFVVPNQKELTELARKKG LKGTWEELCNSCEMENEVLK VLSEAAISASLEKFEIPVKI RLSPPEWTPETGLVTDAFKL KRKELKTHYQADIERMYGRK
Specificity	A synthetic peptide corresponding to a sequence within amino acids 621-720 of human ACSL3 (NP_004448.2).

ADDITIONAL INFORMATION

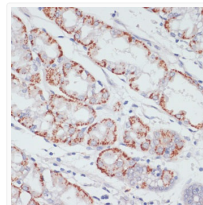
Note **STRICTLY FOR FURTHER SCIENTIFIC RESEARCH USE ONLY (RUO). MUST NOT TO BE USED IN DIAGNOSTIC OR THERAPEUTIC APPLICATIONS.**



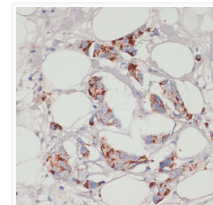
Immunohistochemistry analysis of ACSL3 in paraffin-embedded mouse heart using ACSL3 Rabbit polyclonal antibody (STJ113279) at dilution of 1:100 (40x lens). Perform microwave antigen retrieval with 10 mM PBS buffer pH 7. 2 before commencing with immunohistochemistry staining protocol.



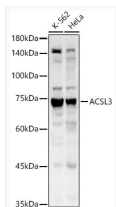
Immunohistochemistry analysis of ACSL3 in paraffin-embedded rat heart using ACSL3 Rabbit polyclonal antibody (STJ113279) at dilution of 1:100 (40x lens). Perform microwave antigen retrieval with 10 mM PBS buffer pH 7. 2 before commencing with immunohistochemistry staining protocol.



Immunohistochemistry analysis of ACSL3 in paraffin-embedded human stomach using ACSL3 Rabbit polyclonal antibody (STJ113279) at dilution of 1:100 (40x lens). Perform microwave antigen retrieval with 10 mM PBS buffer pH 7. 2 before commencing with immunohistochemistry staining protocol.



Immunohistochemistry analysis of ACSL3 in paraffin-embedded human mammary cancer using ACSL3 Rabbit polyclonal antibody (STJ113279) at dilution of 1:100 (40x lens). Perform microwave antigen retrieval with 10 mM PBS buffer pH 7. 2 before commencing with immunohistochemistry staining protocol.



Western blot analysis of various lysates using ACSL3 Rabbit polyclonal antibody (STJ113279) at 1:1000 dilution. Secondary antibody: HRP Goat Anti-Rabbit IgG (H+L) (STJS000856) at 1:10000 dilution. Lysates/proteins: 25 µg per lane. Blocking buffer: 3% nonfat dry milk in TBST. Detection: ECL Basic Kit. Exposure time: 10s.