

Anti-OTUB1 antibody (1-220) (STJ113258)

GENERAL INFORMATION

Product Type	Primary antibodies
Applications	WB/IF/ICC/ELISA
Host / Source	Rabbit
Reactivity	Human/Mouse/Rat

PRODUCT PROPERTIES

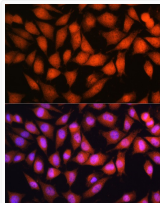
Clonality	Polyclonal
Concentration	Lot specific
Conjugation	Unconjugated
Purification	Affinity purification
Dilution Range	WB:1:500-1:2000 IF/CC:1:50-1:200 ELISA:Recommended starting concentration is 1 μ g/mL. Please optimize the concentration based on your specific assay requirements.
Formulation	PBS with 0.01% Thimerosal, 50% Glycerol, pH 7.3.
Isotype	IgG
Molecular Weight	Protein Mw: 31kDa Observed Mw: 37kDa
Storage Instruction	Store at -20°C for up to 1 year from the date of receipt, and avoid repeat freeze-thaw cycles.

TARGET INFORMATION

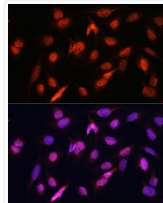
Gene ID	55611
Gene Symbol	OTUB1
UniProt ID	OTUB1_HUMAN
Immunogen Region	1-220
Immunogen Sequence	MAAEPPQQKQKQEP LGS DSEGVNCLAYDEAIMAQDRIQQE IAVQNPLVSRERLELSVLYKE YAEDDNIYQQKIKDLHKKYS YIRKTRPDGNCFYRAFGFSH LEALLDDSKELQRFKAVSAK SKEDLVSGGFTEFTIEDFHN TFMDLIEQVEKQTSVADLLA SFNDQSTSDYLVVYLRLLTS GYLQRESKFFFEHFIEGGRTV KEFCQQEVEPMCKESDHIHI
Specificity	Recombinant fusion protein containing a sequence corresponding to amino acids 1-220 of human OTUB1 (NP_060140.2).

ADDITIONAL INFORMATION

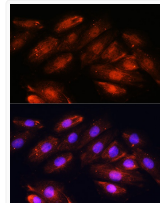
Note STRICTLY FOR FURTHER SCIENTIFIC RESEARCH USE ONLY (RUO). MUST NOT TO BE USED IN DIAGNOSTIC OR THERAPEUTIC APPLICATIONS.



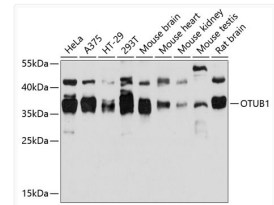
Immunofluorescence analysis of L929 cells using OTUB1 Rabbit polyclonal antibody (STJ113258) at dilution of 1:100. Blue: DAPI for nuclear staining.



Immunofluorescence analysis of U2OS cells using OTUB1 Rabbit polyclonal antibody (STJ113258) at dilution of 1:100. Blue: DAPI for nuclear staining.



Immunofluorescence analysis of H9C2 cells using OTUB1 Rabbit polyclonal antibody (STJ113258) at dilution of 1:100. Blue: DAPI for nuclear staining.



Western blot analysis of various lysates using OTUB1 Rabbit polyclonal antibody (STJ113258) at 1:3000 dilution. Secondary antibody: HRP Goat Anti-Rabbit IgG (H+L) (STJS000856) at 1:10000 dilution. Lysates/proteins: 25 μ g per lane. Blocking buffer: 3% nonfat dry milk in TBST. Detection: ECL Basic Kit. Exposure time: 15s.