

## Anti-NLRP7 antibody (800-1000) (STJ113232)

### GENERAL INFORMATION

Product Type	Primary antibodies
Applications	WB/ELISA
Host / Source	Rabbit
Reactivity	Human

### PRODUCT PROPERTIES

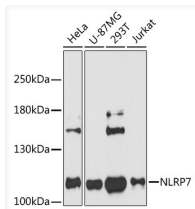
Clonality	Polyclonal
Concentration	Lot specific
Conjugation	Unconjugated
Purification	Affinity purification
Dilution Range	WB:1:500-1:2000 ELISA:Recommended starting concentration is 1 µg/mL. Please optimize the concentration based on your specific assay requirements.
Formulation	PBS with 0.01% Thimerosal, 50% Glycerol, pH 7.3.
Isotype	IgG
Molecular Weight	Protein Mw: 112kDa Observed Mw: 110kDa
Storage Instruction	Store at -20°C for up to 1 year from the date of receipt, and avoid repeat freeze-thaw cycles.

### TARGET INFORMATION

Gene ID	<a href="#">199713</a>
Gene Symbol	<a href="#">NLRP7</a>
UniProt ID	<a href="#">NALP7_HUMAN</a>
Immunogen Region	800-1000
Immunogen Sequence	CRLTEASCKDLAAVLVSKK LTHLCLAKNPIGDTGVKFLC EGLSYPDCKLQTLVLOQCSI TKLGCRYLSEALQEACSLTN LDLSINQIARGLWILCOALE NPNCNLKHLRLWSCSLMPFY CQHLSGALLSNQKLETLDLG QNHLWKSGIIKLFGVLRQRT GSLKILRLKTYETNLEIKKL LEEVEKENPKLTIDCNASGA T
Specificity	Recombinant fusion protein containing a sequence corresponding to amino acids 800-1000 of human NLRP7 (NP_631915.2).

### ADDITIONAL INFORMATION

Note **STRICTLY FOR FURTHER SCIENTIFIC RESEARCH USE ONLY (RUO). MUST NOT TO BE USED IN DIAGNOSTIC OR THERAPEUTIC APPLICATIONS.**



Western blot analysis of various lysates using NLRP7 Rabbit pAb (STJ113232) at 1:3000 dilution.

Secondary antibody: HRP-conjugated Goat anti-Rabbit IgG (H+L) (STJS000856) at 1:10000 dilution.

Lysates/proteins: 25 µg per lane.

Blocking buffer: 3% nonfat dry milk in TBST.

Detection: ECL Basic Kit

Exposure time: 40s.