

Anti-SEC61A1 antibody (310-420) (STJ113219)

GENERAL INFORMATION

Product Type	Primary antibodies
Applications	WB/IF/ICC/ELISA
Host / Source	Rabbit
Reactivity	Human/Mouse/Rat

PRODUCT PROPERTIES

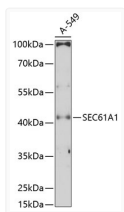
Clonality	Polyclonal
Concentration	Lot specific
Conjugation	Unconjugated
Purification	Affinity purification
Dilution Range	WB:1:500-1:2000 IF/CC:1:100-1:500 ELISA:Recommended starting concentration is 1 μ g/mL. Please optimize the concentration based on your specific assay requirements.
Formulation	PBS with 0.01% Thimerosal, 50% Glycerol, pH 7.3.
Isotype	IgG
Molecular Weight	Protein Mw: 52kDa Observed Mw: 52kDa
Storage Instruction	Store at -20°C for up to 1 year from the date of receipt, and avoid repeat freeze-thaw cycles.

TARGET INFORMATION

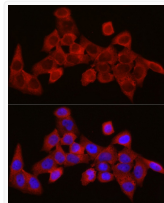
Gene ID	29927
Gene Symbol	SEC61A1
UniProt ID	S61A1_HUMAN
Immunogen Region	310-420
Immunogen Sequence	ARFSGNLLVSLGLTWSDTSS GGPARAYPVGGLCYLSPPE SFGSVLEDPVHAVVYIVFML GSCAFFSKTWIEVSGSSAKD VAKQLKEQQMVMRGRHRETSM VHELNRVIPTA
Specificity	Recombinant fusion protein containing a sequence corresponding to amino acids 310-420 of human SEC61A1 (NP_037468.1).

ADDITIONAL INFORMATION

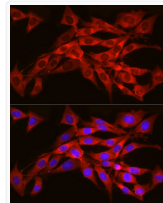
Note STRICTLY FOR FURTHER SCIENTIFIC RESEARCH USE ONLY (RUO). MUST NOT TO BE USED IN DIAGNOSTIC OR THERAPEUTIC APPLICATIONS.



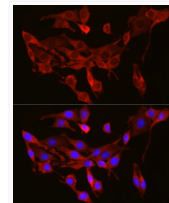
Western blot analysis of extracts of A-549 cells, using SEC61A1 Antibody (STJ113219) at 1:3000 dilution. Secondary antibody: HRP Goat Anti-rabbit IgG (H+L) (STJS000856) at 1:10000 dilution. Lysates/proteins: 25 μ g per lane. Blocking buffer: 3% non-fat dry milk in TBST. Detection: ECL Enhanced Kit. Exposure time: 90s.



Immunofluorescence analysis of HeLa cells using SEC61A1 rabbit polyclonal antibody (STJ113219) at dilution of 1:300 (40x lens). Blue: DAPI for nuclear staining.



Immunofluorescence analysis of NIH/3T3 cells using SEC61A1 rabbit polyclonal antibody (STJ113219) at dilution of 1:300 (40x lens). Blue: DAPI for nuclear staining.



Immunofluorescence analysis of PC-12 cells using SEC61A1 rabbit polyclonal antibody (STJ113219) at dilution of 1:300 (40x lens). Blue: DAPI for nuclear staining.