

Anti-SEC13 antibody (1-322) (STJ113218)

GENERAL INFORMATION

Product Type	Primary antibodies
Applications	WB/IHC/IF/ICC/ELISA
Host / Source	Rabbit
Reactivity	Human/Mouse/Rat

PRODUCT PROPERTIES

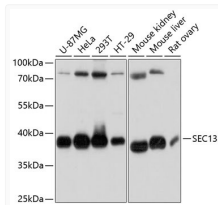
Clonality	Polyclonal
Concentration	Lot specific
Conjugation	Unconjugated
Purification	Affinity purification
Dilution Range	WB:1:500-1:2000 IHC:1:50-1:200 IF/CC:1:50-1:200 ELISA:Recommended starting concentration is 1 Mu g/mL. Please optimize the concentration based on your specific assay requirements.
Formulation	PBS with 0.01% Thimerosal, 50% Glycerol, pH 7.3.
Isotype	IgG
Molecular Weight	Protein Mw: 36kDa Observed Mw: 38kDa
Storage Instruction	Store at -20°C for up to 1 year from the date of receipt, and avoid repeat freeze-thaw cycles.

TARGET INFORMATION

Gene ID	6396
Gene Symbol	SEC13
UniProt ID	SEC13_HUMAN
Immunogen Region	1-322
Immunogen Sequence	MVSVINTVDTSHEDMIHDAQ MDYYGTRLATCSDRSVKIF DVRNGGQILIADLRGHEGPV WQVAWAHPMYGNILASCSYD RKVIVREENGWTKESHEHA GHDSSVNSVCWAPHDYGLIL ACGSSDGAISLLTYTGEGQW EVKKINNAHTIGCNAVSWAP AVVPGSLIDHPGQKPNYIK RFASGGCDNLIKLWKEEEDG QWKKEEQKLEAHSWVRDVAW APSIGLPTSTIASCSQDGR
Specificity	Recombinant fusion protein containing a sequence corresponding to amino acids 1-322 of human SEC13 (NP_899195.1).

ADDITIONAL INFORMATION

Note STRICTLY FOR FURTHER SCIENTIFIC RESEARCH USE ONLY (RUO). MUST NOT TO BE USED IN DIAGNOSTIC OR THERAPEUTIC APPLICATIONS.



Western blot analysis of various lysates using SEC13 Rabbit polyclonal antibody (STJ113218) at 1:3000 dilution. Secondary antibody: HRP Goat Anti-Rabbit IgG (H+L) (STJS000856) at 1:10000 dilution. Lysates/proteins: 25 Mu g per lane. Blocking buffer: 3% nonfat dry milk in TBST. Detection: ECL Basic Kit. Exposure time: 10s.