

Anti-MAGEA4 antibody (28-317) (STJ113212)

GENERAL INFORMATION

Product Type	Primary antibodies
Applications	WB/ELISA
Host / Source	Rabbit
Reactivity	Human/Mouse/Rat

PRODUCT PROPERTIES

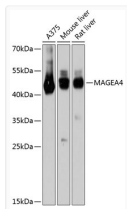
Clonality	Polyclonal
Concentration	Lot specific
Conjugation	Unconjugated
Purification	Affinity purification
Dilution Range	WB:1:500-1:2000 ELISA:Recommended starting concentration is 1 µg/mL. Please optimize the concentration based on your specific assay requirements.
Formulation	PBS with 0.01% Thimerosal, 50% Glycerol, pH 7.3.
Isotype	IgG
Molecular Weight	Protein Mw: 35kDa Observed Mw: 50kDa
Storage Instruction	Store at -20°C for up to 1 year from the date of receipt, and avoid repeat freeze-thaw cycles.

TARGET INFORMATION

Gene ID	4103
Gene Symbol	MAGEA4
UniProt ID	MAGA4_HUMAN
Immunogen Region	28-317
Immunogen Sequence	AQAPTTEEQEAIVSSSSPLV PGTLEEVPAAESAGPPQSPQ GASALPTTISFTCWQRPNEG SSSQEEEGPSTSPDAESLFR EALSNKVDELAHFLLRKYRA KELVTKAEMLERVIKINYKRC FPVIFGKASESLKMFIDIV KEVDPAASNTYTLVTCLGLSY DGLLGNNQIFPKTGLLIIVL GTIAMEGDSASEEEIWEELG VMGVYDGREHTVYGEPRKLL TQDWVQENYLEYRQVPGSN
Specificity	Recombinant fusion protein containing a sequence corresponding to amino acids 28-317 of human MAGEA4 (NP_002353.3).

ADDITIONAL INFORMATION

Note **STRICTLY FOR FURTHER SCIENTIFIC RESEARCH USE ONLY (RUO). MUST NOT TO BE USED IN DIAGNOSTIC OR THERAPEUTIC APPLICATIONS.**



Western blot analysis of various lysates using MAGEA4 Rabbit polyclonal antibody (STJ113212) at 1:3000 dilution. Secondary antibody: HRP Goat Anti-Rabbit IgG (H+L) (STJS000856) at 1:10000 dilution. Lysates/proteins: 25 µg per lane. Blocking buffer: 3% nonfat dry milk in TBST. Detection: ECL Basic Kit. Exposure time: 10s.