

## Anti-HEPACAM antibody (35-245) (STJ113194)

### GENERAL INFORMATION

Product Type	Primary antibodies
Applications	WB/ELISA
Host / Source	Rabbit
Reactivity	Human/Mouse/Rat

### PRODUCT PROPERTIES

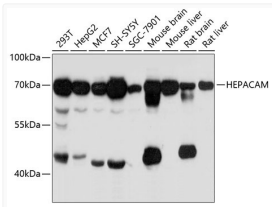
Clonality	Polyclonal
Concentration	Lot specific
Conjugation	Unconjugated
Purification	Affinity purification
Dilution Range	WB:1:500-1:2000 ELISA:Recommended starting concentration is 1 Mu g/mL. Please optimize the concentration based on your specific assay requirements.
Formulation	PBS with 0.01% Thimerosal, 50% Glycerol, pH 7.3.
Isotype	IgG
Molecular Weight	Protein Mw: 46kDa Observed Mw: 70kDa
Storage Instruction	Store at-20°C for up to 1 year from the date of receipt, and avoid repeat freeze-thaw cycles.

### TARGET INFORMATION

Gene ID	<a href="#">220296</a>
Gene Symbol	<a href="#">HEPACAM</a>
UniProt ID	<a href="#">HECAM_HUMAN</a>
Immunogen Region	35-245
Immunogen Sequence	NITSPVRLIHGTVGKSALLS VQYSSTSSDRPVVKWQLKRD KPVTVVQSIGTEVIGTLRPD YRDRIRLFENGSLLLSDLQL ADEGTYEVEISITDDTFTGE KTINLTVDVPISRPQVLVAS TTVLELSEAFNLNCSHENGKTPSYTWLKDGGKPLLNDSRML LSPDQKVLITITRVLMEDDDL YSCMVENPISQGRSLPVKIT VYRRSSLYIIL
Specificity	Recombinant fusion protein containing a sequence corresponding to amino acids 35-245 of human HEPACAM (NP_689935.2).

### ADDITIONAL INFORMATION

Note **STRICTLY FOR FURTHER SCIENTIFIC RESEARCH USE ONLY (RUO). MUST NOT TO BE USED IN DIAGNOSTIC OR THERAPEUTIC APPLICATIONS.**



Western blot analysis of various lysates using HEPACAM Rabbit polyclonal antibody (STJ113194) at 1:3000 dilution. Secondary antibody: HRP Goat Anti-Rabbit IgG (H+L) (STJS000856) at 1:10000 dilution. Lysates/proteins: 25 Mu g per lane. Blocking buffer: 3% nontat dry milk in TBST. Detection: ECL Basic Kit. Exposure time: 10s.