

Anti-A1BG antibody (236-495) (STJ113188)

GENERAL INFORMATION

Product Type	Primary antibodies
Applications	WB/ELISA
Host / Source	Rabbit
Reactivity	Human/Mouse/Rat

PRODUCT PROPERTIES

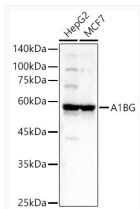
Clonality	Polyclonal
Concentration	Lot specific
Conjugation	Unconjugated
Purification	Affinity purification
Dilution Range	WB:1:2000-1:4000 ELISA:Recommended starting concentration is 1 Mu g/mL. Please optimize the concentration based on your specific assay requirements.
Formulation	PBS with 0.01% Thimerosal, 50% Glycerol, pH 7.3.
Isotype	IgG
Molecular Weight	Protein Mw: 54kDa Observed Mw: 61kDa
Storage Instruction	Store at -20°C for up to 1 year from the date of receipt, and avoid repeat freeze-thaw cycles.

TARGET INFORMATION

Gene ID	1
Gene Symbol	A1BG
UniProt ID	A1BG_HUMAN
Immunogen Region	236-495
Immunogen Sequence	LSGVDFQLRRGEKELLVPRS STSPDRIFHLNAVALGDGG HYTCRYRLHDNQNGWSGDSA PVELILSDETLPAPEFSPEP ESGRALRLRCLAPLEGARFA LVREDRGGRRVHRFQSPAGT EALFELHNIADVADSNYSCV YVDLKPFGGSAPSERLELH VDGPPRPQLRATWSGAVLA GRDAVLRCEGPIPDVTFELL REGETKAVKTVRTPGAAANL ELIFVGPQHAGNYRCRYRS
Specificity	Recombinant fusion protein containing a sequence corresponding to amino acids 236-495 of human A1BG (NP_570602.2).

ADDITIONAL INFORMATION

Note **STRICTLY FOR FURTHER SCIENTIFIC RESEARCH USE ONLY (RUO). MUST NOT TO BE USED IN DIAGNOSTIC OR THERAPEUTIC APPLICATIONS.**



Western blot analysis of various lysates, using A1BG Rabbit polyclonal antibody (STJ113188) at 1:4000 dilution. Secondary antibody: HRP Goat Anti-Rabbit IgG (H+L) (STJS000856) at 1:10000 dilution. Lysates/proteins: 25 Mu g per lane. Blocking buffer: 3% nonfat dry milk in TBST. Detection: ECL Basic Kit. Exposure time: 3s.