

## Anti-JAK2 antibody (933-1132) (STJ113166)

### GENERAL INFORMATION

Product Type	Primary antibodies
Applications	WB/IHC-P/IF/ICC/ELISA
Host / Source	Rabbit
Reactivity	Human/Mouse/Rat

### PRODUCT PROPERTIES

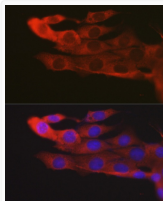
Clonality	Polyclonal
Concentration	Lot specific
Conjugation	Unconjugated
Purification	Affinity purification
Dilution Range	WB:1:500-1:1000 IHC-P:1:50-1:200 IF/ICC:1:50-1:200 ELISA:Recommended starting concentration is 1 Mu g/mL. Please optimize the concentration based on your specific assay requirements.
Formulation	PBS with 0.02% Sodium Azide, 50% Glycerol, pH 7.3.
Isotype	IgG
Molecular Weight	Protein Mw: 131kDa Observed Mw: 125kDa
Storage Instruction	Store at -20°C for up to 1 year from the date of receipt, and avoid repeat freeze-thaw cycles.

### TARGET INFORMATION

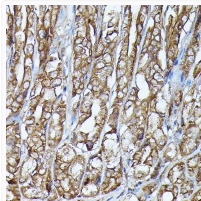
Gene ID	<a href="#">3717</a>
Gene Symbol	<a href="#">JAK2</a>
UniProt ID	<a href="#">JAK2_HUMAN</a>
Immunogen Region	933-1132
Immunogen Sequence	PYGLSLRDYLQKHKERIDHIK LLQYTSQICKGMEYLGTKRY IHRDLATRNILVENENRVKI GDFGLTKVLPQDKKEYYKVE PGESPIFWYAPESLTSKFS VASDVWSFGVVLVELFTYIE KSKSPPAEFMRMIGNDKQGQ MIVFHLLIELLKNNGRLPD GCPDEIYMIMTECWNNNVNQ RPSFRDLALRVQIRDNMAG
Specificity	Recombinant fusion protein containing a sequence corresponding to amino acids 933-1132 of human JAK2 (NP_004963.1).

### ADDITIONAL INFORMATION

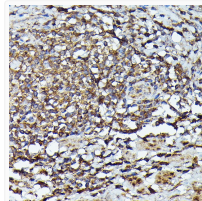
Note **STRICTLY FOR FURTHER SCIENTIFIC RESEARCH USE ONLY (RUO). MUST NOT TO BE USED IN DIAGNOSTIC OR THERAPEUTIC APPLICATIONS.**



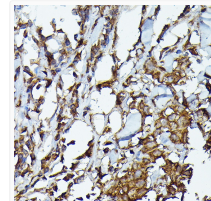
Immunofluorescence analysis of NIH/3T3 cells using JAK2 Rabbit polyclonal antibody (STJ113166) at dilution of 1:100 (40x lens). Secondary antibody: Cy3 Goat Anti-Rabbit IgG (H+L) at 1:500 dilution. Blue: DAPI for nuclear staining.



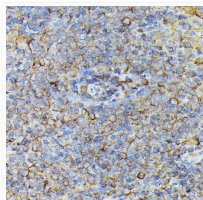
Immunohistochemistry analysis of JAK2 in paraffin-embedded mouse stomach using JAK2 Rabbit polyclonal antibody (STJ113166) at dilution of 1:100 (40x lens). Perform high pressure antigen retrieval with 10 mM citrate buffer pH 6.0 before commencing with immunohistochemistry staining protocol.



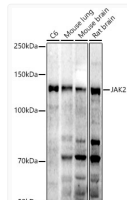
Immunohistochemistry analysis of JAK2 in paraffin-embedded human esophageal using JAK2 Rabbit polyclonal antibody (STJ113166) at dilution of 1:100 (40x lens). Perform high pressure antigen retrieval with 10 mM citrate buffer pH 6.0 before commencing with immunohistochemistry staining protocol.



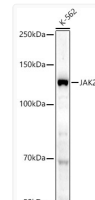
Immunohistochemistry analysis of JAK2 in paraffin-embedded human breast cancer using JAK2 Rabbit polyclonal antibody (STJ113166) at dilution of 1:100 (40x lens). Perform high pressure antigen retrieval with 10 mM citrate buffer pH 6.0 before commencing with immunohistochemistry staining protocol.



Immunohistochemistry analysis of JAK2 in paraffin-embedded rat spleen using JAK2 Rabbit polyclonal antibody (STJ113166) at dilution of 1:100 (40x lens). Perform high pressure antigen retrieval with 10 mM citrate buffer pH 6.0 before commencing with immunohistochemistry staining protocol.



Western blot analysis of various lysates using JAK2 Rabbit polyclonal antibody (STJ113166) at 1:1000 dilution. Secondary antibody: HRP Goat Anti-Rabbit IgG (H+L) (STJS000856) at 1:10000 dilution. Lysates/proteins: 25 Mu g per lane. Blocking buffer: 3% nonfat dry milk in TBST. Detection: ECL Enhanced Kit. Exposure time: 120s.



Western blot analysis of lysates from K-562 cells, using JAK2 Rabbit polyclonal antibody (STJ113166) at 1:1000 dilution. Secondary antibody: HRP Goat Anti-Rabbit IgG (H+L) (STJS000856) at 1:10000 dilution. Lysates/proteins: 25 Mu g per lane. Blocking buffer: 3% nonfat dry milk in TBST. Detection: ECL Basic Kit. Exposure time: 180s.