

Anti-ATG5 antibody (28-275) (STJ113131)

GENERAL INFORMATION

Product Type	Primary antibodies
Applications	WB/IHC-P/ELISA
Host / Source	Rabbit
Reactivity	Human/Mouse/Rat

PRODUCT PROPERTIES

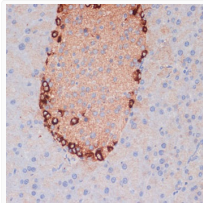
Clonality	Polyclonal
Concentration	Lot specific
Conjugation	Unconjugated
Purification	Affinity purification
Dilution Range	WB:1:500-1:2000 IHC-P:1:50-1:100 ELISA:Recommended starting concentration is 1 µg/mL. Please optimize the concentration based on your specific assay requirements.
Formulation	PBS with 0.02% Sodium Azide, 50% Glycerol, pH 7.3.
Isotype	IgG
Molecular Weight	Protein Mw: 32kDa Observed Mw: 55kDa
Storage Instruction	Store at -20°C for up to 1 year from the date of receipt, and avoid repeat freeze-thaw cycles.

TARGET INFORMATION

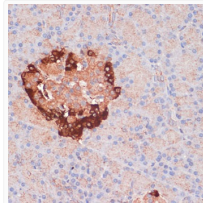
Gene ID	9474
Gene Symbol	ATG5
UniProt ID	ATG5_HUMAN
Immunogen Region	28-275
Immunogen Sequence	TEREAEPYLLPRVSYLTL VTDKVKKHFQKVMRQEDISE IWFEYEGTPLKWHYPIGLLF DLLASSALPWNITVHFKSF PEKDLLHCPSKDAIEAHFMS CMKEADALKHKSQVINEMQK KDHKQLWMGLQDRFDQFWA INRKLMEYPAEENGFRYIPF RIYQTTTERPFIQKLRPVA ADGQLHTLGDLLKEVCPSAI DPEDGEKKNQVMIHGIEPML ETPLQWLSEHLSYPDNFLH
Specificity	Recombinant fusion protein containing a sequence corresponding to amino acids 28-275 of human ATG5 (NP_004840.1).

ADDITIONAL INFORMATION

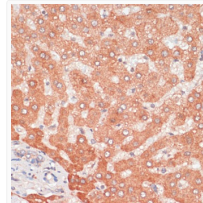
Note STRICTLY FOR FURTHER SCIENTIFIC RESEARCH USE ONLY (RUO). MUST NOT TO BE USED IN DIAGNOSTIC OR THERAPEUTIC APPLICATIONS.



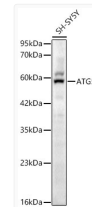
Immunohistochemistry analysis of paraffin-embedded mouse pancreas using ATG5 antibody (STJ113131) at dilution of 1:100 (40x lens). Perform microwave antigen retrieval with 10 mM PBS buffer pH 7.2 before commencing with immunohistochemistry staining protocol.



Immunohistochemistry analysis of paraffin-embedded rat pancreas using ATG5 antibody (STJ113131) at dilution of 1:100 (40x lens). Perform microwave antigen retrieval with 10 mM PBS buffer pH 7.2 before commencing with immunohistochemistry staining protocol.



Immunohistochemistry analysis of paraffin-embedded human liver using ATG5 antibody (STJ113131) at dilution of 1:100 (40x lens). Perform microwave antigen retrieval with 10 mM PBS buffer pH 7.2 before commencing with immunohistochemistry staining protocol.



Western blot analysis of SH-SY5Y, using ATG5 Rabbit polyclonal antibody (STJ113131) at 1:1000 dilution. Secondary antibody: HRP Goat Anti-Rabbit IgG (H+L) (STJS000856) at 1:10000 dilution. Lysates/proteins: 25ug per lane. Blocking buffer: 3% nonfat dry milk in TBST. Detection: ECL Basic Kit. Exposure time: 60s.