

Anti-MKI67 antibody (700-800) (STJ113112)

GENERAL INFORMATION

Product Type	Primary antibodies
Applications	IF/ICC/ELISA
Host / Source	Rabbit
Reactivity	Human

PRODUCT PROPERTIES

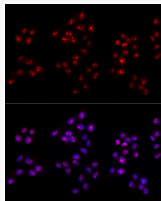
Clonality	Polyclonal
Concentration	Lot specific
Conjugation	Unconjugated
Purification	Affinity purification
Dilution Range	IF/ICC:1:50-1:200 ELISA:Recommended starting concentration is 1 µg/mL. Please optimize the concentration based on your specific assay requirements.
Formulation	PBS with 0.05% Proclin300, 50% Glycerol, pH 7.3.
Isotype	IgG
Molecular Weight	Protein Mw: 359kDa Observed Mw: 359kDa
Storage Instruction	Store at -20°C for up to 1 year from the date of receipt, and avoid repeat freeze-thaw cycles.

TARGET INFORMATION

Gene ID	4288
Gene Symbol	MKI67
UniProt ID	KI67_HUMAN
Immunogen Region	700-800
Immunogen Sequence	GEVHSQFSTGHANSPTIII GKAHTEKVHVPARPYRVLNN FISNQKMDFKEDLSGIAEMF KTPVKEQQLTSTCHIAISN SENLLGKQFQGTDSGEELLP
Specificity	A synthetic peptide corresponding to a sequence within amino acids 700-800 of human Ki67 (NP_002408.3).

ADDITIONAL INFORMATION

Note STRICTLY FOR FURTHER SCIENTIFIC RESEARCH USE ONLY (RUO). MUST NOT TO BE USED IN DIAGNOSTIC OR THERAPEUTIC APPLICATIONS.



Immunofluorescence analysis of HeLa cells using Ki67 Rabbit polyclonal antibody (STJ113112) at dilution of 1:100 (40x lens). Secondary antibody: Cy3 Goat Anti-Rabbit IgG (H+L) at 1:500 dilution. Blue: DAPI for nuclear staining.