

Anti-CDC25C antibody (174-473) (STJ113078)

GENERAL INFORMATION

Product Type	Primary antibodies
Applications	IF/ICC/ELISA
Host / Source	Rabbit
Reactivity	Human

PRODUCT PROPERTIES

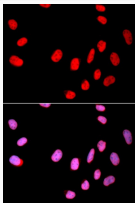
Clonality	Polyclonal
Concentration	Lot specific
Conjugation	Unconjugated
Purification	Affinity purification
Dilution Range	IF/ICC:1:50-1:200 ELISA:Recommended starting concentration is 1 µg/mL. Please optimize the concentration based on your specific assay requirements.
Formulation	PBS with 0.02% Sodium Azide, 50% Glycerol, pH 7.3.
Isotype	IgG
Molecular Weight	Protein Mw: 53kDa Observed Mw: Refer to figures
Storage Instruction	Store at -20°C for up to 1 year from the date of receipt, and avoid repeat freeze-thaw cycles.

TARGET INFORMATION

Gene ID	995
Gene Symbol	CDC25C
UniProt ID	MPIP3_HUMAN
Immunogen Region	174-473
Immunogen Sequence	PKLDKNPNLGEDQAEISDE LMEFSLKDQEAKVSRSGLYR SPSMPENLNRPRLKQVEKFK DNTIPDKVKKKYFSGQGKLR KGLCLKKTVSLCDITITQML EEDSNQGHGIDFSKVCALP TVSGKHQDLKYVNPETVAAL LSGKFGGLIEKFYVIDCRYP YEYLGHHIQQALNLYSQEEL FNFFLKKPIVPLDTQKRIII VFHCEFSSERGPRMCRCLRE EDRSLNQYPALYPPELYIL
Specificity	Recombinant fusion protein containing a sequence corresponding to amino acids 174-473 of human CDC25C (NP_001781.2).

ADDITIONAL INFORMATION

Note STRICTLY FOR FURTHER SCIENTIFIC RESEARCH USE ONLY (RUO). MUST NOT TO BE USED IN DIAGNOSTIC OR THERAPEUTIC APPLICATIONS.



Immunofluorescence analysis of U2OS cells using CDC25C antibody (STJ113078). Blue: DAPI for nuclear staining.