

Anti-CASP3 antibody (6-105) (STJ113073)

GENERAL INFORMATION

Product Type	Primary antibodies
Applications	WB/IHC-P/IF/ICC/ELISA
Host / Source	Rabbit
Reactivity	Human/Mouse/Rat

PRODUCT PROPERTIES

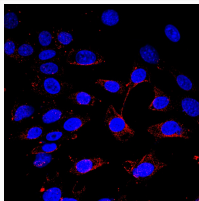
Clonality	Polyclonal
Concentration	Lot specific
Conjugation	Unconjugated
Purification	Affinity purification
Dilution Range	WB:1:500-1:1000 IHC-P:1:50-1:200 IF/CC:1:100-1:500 ELISA:Recommended starting concentration is 1 µg/mL. Please optimize the concentration based on your specific assay requirements.
Formulation	PBS with 0.05% Proclin300, 50% Glycerol, pH 7.3.
Isotype	IgG
Molecular Weight	Protein Mw: 32kDa Observed Mw: 17kDa/19kDa/32kDa
Storage Instruction	Store at -20°C for up to 1 year from the date of receipt, and avoid repeat freeze-thaw cycles.

TARGET INFORMATION

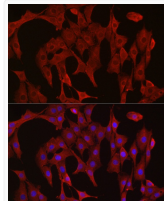
Gene ID	836
Gene Symbol	CASP3
UniProt ID	CASP3_HUMAN
Immunogen Region	6-105
Immunogen Sequence	NSVDSKSIKNLEPKIIHGSE SMDSGISLDNSYKMDYPEMG LCIIINKNFHKSTGMTSRS GTDVDAANLRETFRNLYEV RNKNDLTREEIVELMRDVSK
Specificity	A synthetic peptide corresponding to a sequence within amino acids 6-105 of human Caspase-3 (NP_004337.2).

ADDITIONAL INFORMATION

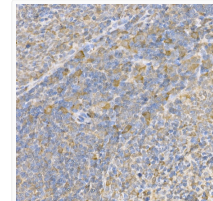
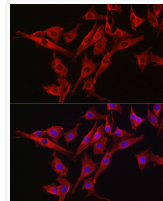
Note **STRICTLY FOR FURTHER SCIENTIFIC RESEARCH USE ONLY (RUO). MUST NOT TO BE USED IN DIAGNOSTIC OR THERAPEUTIC APPLICATIONS.**



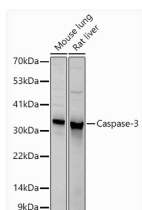
Immunofluorescence analysis of PC-12 cells using Caspase-3 Rabbit polyclonal antibody (STJ113073) at dilution of 1:300 (40x lens). Blue: DAPI for nuclear staining.



Immunofluorescence analysis of NIH/3T3 cells using Caspase-3 Rabbit polyclonal antibody (STJ113073) at dilution of 1:300 (40x lens). Blue: DAPI for nuclear staining.



Immunohistochemistry analysis of paraffin-embedded rat spleen using Caspase-3 Rabbit polyclonal antibody (STJ113073) at dilution of 1:100 (40x lens). Perform high pressure antigen retrieval with 10 mM citrate buffer pH 6.0 before commencing with immunohistochemistry staining protocol.



Western blot analysis of extracts of various cell lines, using Caspase-3 antibody (STJ113073) at 1:1000 dilution. Secondary antibody: HRP Goat Anti-Rabbit IgG (H+L) (STJS000856) at 1:10000 dilution. Lysates/proteins: 25 µg per lane. Blocking buffer: 3% nonfat dry milk in TBST. Detection: ECL Basic Kit. Exposure time: 5s.