

Anti-HDAC6 antibody (836-1104) (STJ113047)

GENERAL INFORMATION

Product Type	Primary antibodies
Applications	WB/IHC-P/IF/ICC/IP/ELISA
Host / Source	Rabbit
Reactivity	Human/Mouse/Rat

PRODUCT PROPERTIES

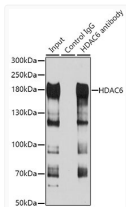
Clonality	Polyclonal
Concentration	Lot specific
Conjugation	Unconjugated
Purification	Affinity purification
Dilution Range	WB:1:500-1:1000 IHC-P:1:100-1:500 IF/ICC:1:50-1:200 IP:0.5 Mu g-4 Mu g antibody for 200 Mu g-400 Mu g extracts of whole cells ELISA:Recommended starting concentration is 1 Mu g/mL. Please optimize the concentration based on your speci
Formulation	PBS with 0.02% Sodium Azide, 50% Glycerol, pH 7.3.
Isotype	IgG
Molecular Weight	Protein Mw: 131kDa Observed Mw: 160kDa
Storage Instruction	Store at -20°C for up to 1 year from the date of receipt, and avoid repeat freeze-thaw cycles.

TARGET INFORMATION

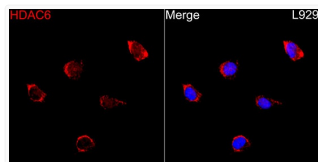
Gene ID	10013
Gene Symbol	HDAC6
UniProt ID	HDAC6_HUMAN
Immunogen Region	836-1104
Immunogen Sequence	VMKVEDREGPSSSKLVTKKA PQPAKPRLAERMTTREKKVL EAGMGKVTSAFGEESTPGQ TNSETAVVALTQDQPSEAAT GGATLAQTISEA AIGGAMLG QTTSEEAVGGATPDQTTSEE TVGGAILDQTTSEDAVGGAT LGQTTSEEAVGGATLAQTTT EAAMEGATLDQTTSEEAPGG TELIQTPLASSTDHQTPPTS PVQGTTPQISPSTLIGSLRT LELGSESQGAESQAPGEE
Specificity	Recombinant fusion protein containing a sequence corresponding to amino acids 836-1104 of human HDAC6 (NP_006035.2).

ADDITIONAL INFORMATION

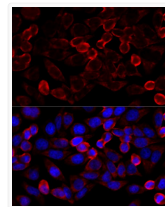
Note STRICTLY FOR FURTHER SCIENTIFIC RESEARCH USE ONLY (RUO). MUST NOT TO BE USED IN DIAGNOSTIC OR THERAPEUTIC APPLICATIONS.



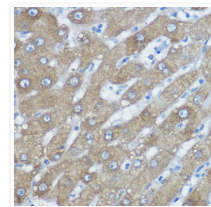
Immunoprecipitation analysis of 100 Mu g extracts of HepG2 cells using 3 Mu g HDAC6 antibody (STJ113047). Western blot was performed from the immunoprecipitate using HDAC6 antibody (STJ113047) at a dilution of 1:1000.



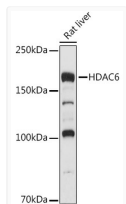
Immunofluorescence analysis of L929 cells using HDAC6 Rabbit polyclonal antibody (STJ113047) at a dilution of 1:100 (40x lens). Secondary antibody: Cy3 Goat Anti-Rabbit IgG (H+L) at 1:500 dilution. Blue: DAPI for nuclear staining.



Immunofluorescence analysis of HeLa cells using HDAC6 Rabbit polyclonal antibody (STJ113047) at dilution of 1:100 (40x lens). Secondary antibody: Cy3 Goat Anti-Rabbit IgG (H+L) at 1:500 dilution. Blue: DAPI for nuclear staining.



Immunohistochemistry analysis of HDAC6 in paraffin-embedded human liver using HDAC6 Rabbit polyclonal antibody (STJ113047) at dilution of 1:400 (40x lens). Perform high pressure antigen retrieval with 10 mM citrate buffer pH 6.0 before commencing with immunohistochemistry staining protocol.



Western blot analysis of lysates from Rat liver, using HDAC6 Rabbit polyclonal antibody (STJ113047) at 1:500 dilution. Secondary antibody: HRP Goat Anti-Rabbit IgG (H+L) (STJS000856) at 1:10000 dilution. Lysates/proteins: 25 Mu g per lane. Blocking buffer: 3% nonfat dry milk in TBST. Detection: ECL Basic Kit. Exposure time: 1s.