

## Anti-TLR2 antibody (600-700) (STJ113031)

### GENERAL INFORMATION

Product Type	Primary antibodies
Applications	WB/IHC-P/IF/ICC/ELISA
Host / Source	Rabbit
Reactivity	Human/Mouse/Rat

### PRODUCT PROPERTIES

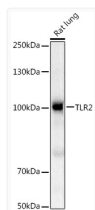
Clonality	Polyclonal
Concentration	Lot specific
Conjugation	Unconjugated
Purification	Affinity purification
Dilution Range	WB:1:500-1:1000 IHC-P:1:50-1:200 IF/CC:1:50-1:200 ELISA:Recommended starting concentration is 1 Mu g/mL. Please optimize the concentration based on your specific assay requirements.
Formulation	PBS with 0.02% Sodium Azide, 50% Glycerol, pH 7.3.
Isotype	IgG
Molecular Weight	Protein Mw: 90kDa Observed Mw: 105kDa
Storage Instruction	Store at -20°C for up to 1 year from the date of receipt, and avoid repeat freeze-thaw cycles.

### TARGET INFORMATION

Gene ID	<a href="#">7097</a>
Gene Symbol	<a href="#">TLR2</a>
UniProt ID	<a href="#">TLR2_HUMAN</a>
Immunogen Region	600-700
Immunogen Sequence	LLILLTGVLCHRFRHGLWYMK MMWAWLQAKRKPRKAPSRNI CYDAFVSYSERDAYWVENLM VQELFNPPFKLCLHKRDF IPGKWIIDNIIDSIEKSHKT V
Specificity	A synthetic peptide corresponding to a sequence within amino acids 600-700 of human TLR2 (NP_003255.2).

### ADDITIONAL INFORMATION

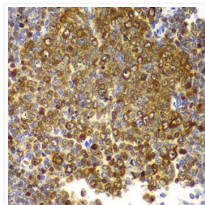
Note STRICTLY FOR FURTHER SCIENTIFIC RESEARCH USE ONLY (RUO). MUST NOT TO BE USED IN DIAGNOSTIC OR THERAPEUTIC APPLICATIONS.



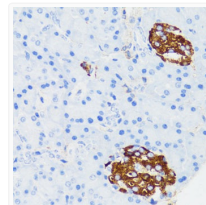
Western blot analysis of lysates from Rat lung, using TLR2 Rabbit pAb (STJ113031) at 1:1000 dilution.

Secondary antibody: HRP-conjugated Goat anti-Rabbit IgG (H+L) (STJS000856) at 1:10000 dilution.

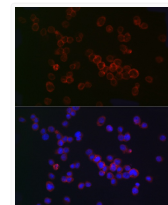
Lysates/proteins: 25 Mu g per lane.  
Blocking buffer: 3% nonfat dry milk in TBST.  
Detection: ECL Basic Kit  
Exposure time: 180s.



Immunohistochemistry analysis of paraffin-embedded Rat spleen using TLR2 Rabbit pAb (STJ113031) at dilution of 1:100 (40x lens). Microwave antigen retrieval performed with 0.01M PBS Buffer (pH 7.2) prior to immunohistochemistry staining.



Immunohistochemistry analysis of paraffin-embedded Mouse islets of langerhans using TLR2 Rabbit pAb (STJ113031) at dilution of 1:150 (40x lens). Microwave antigen retrieval performed with 0.01M PBS Buffer (pH 7.2) prior to immunohistochemistry staining.



Immunofluorescence analysis of THP-1 cells using TLR2 Rabbit pAb (STJ113031) at dilution of 1:100 (40x lens). Secondary antibody: Cy3-conjugated Goat anti-Rabbit IgG (H+L) (STJS001166) at 1:500 dilution. Blue: DAPI for nuclear staining.