

Anti-RELA antibody (450-551) (STJ113021)

GENERAL INFORMATION

Product Type	Primary antibodies
Applications	WB/IF/ICC/IP/ELISA
Host / Source	Rabbit
Reactivity	Human/Mouse/Rat

PRODUCT PROPERTIES

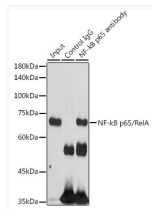
Clonality	Polyclonal
Concentration	Lot specific
Conjugation	Unconjugated
Purification	Affinity purification
Dilution Range	WB:1:500-1:2000 IF/CC:1:50-1:200 IP:0.5 Mu g-4 Mu g antibody for 200 Mu g-400 Mu g extracts of whole cells ELISA:Recommended starting concentration is 1 Mu g/mL. Please optimize the concentration based on your specific assay requirements
Formulation	PBS with 0.05% Proclin300, 50% Glycerol, pH 7.3.
Isotype	IgG
Molecular Weight	Protein Mw: 60kDa Observed Mw: 65kDa
Storage Instruction	Store at -20°C for up to 1 year from the date of receipt, and avoid repeat freeze-thaw cycles.

TARGET INFORMATION

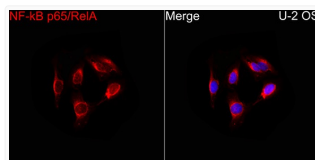
Gene ID	5970
Gene Symbol	RELA
UniProt ID	TF65_HUMAN
Immunogen Region	450-551
Immunogen Sequence	LGALLGNSTDPVFTDLASV DNSEFQQLLNQGIPVAPHTT EPMLMEYPEAITRLVTGAQR PPDPAPAPLGPGLPGLNGLLS GDEDFSSIADMDFSALLSQQI SS
Specificity	A synthetic peptide corresponding to a sequence within amino acids 450-551 of human NF-kB p65/RelA (NP_068810.3).

ADDITIONAL INFORMATION

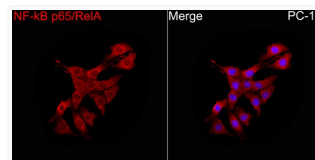
Note **STRICTLY FOR FURTHER SCIENTIFIC RESEARCH USE ONLY (RUO). MUST NOT TO BE USED IN DIAGNOSTIC OR THERAPEUTIC APPLICATIONS.**



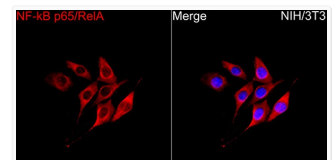
Immunoprecipitation analysis of 300 Mu g extracts of 293T cells using 3 Mu g NF-kB p65/RelA antibody (STJ113021). Western blot was performed from the immunoprecipitate using NF-kB p65/RelA antibody (STJ113021) at a dilution of 1:1000.



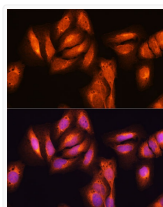
Immunofluorescence analysis of U-2 OS cells using NF-kB p65/RelA Rabbit polyclonal antibody (STJ113021) at a dilution of 1:100 (40x lens). Secondary antibody: Cy3-conjugated Goat anti-Rabbit IgG (H+L) at 1:500 dilution. Blue: DAPI for nuclear staining.



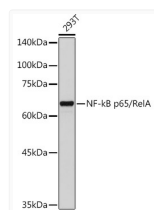
Immunofluorescence analysis of PC-12 cells using NF-kB p65/RelA Rabbit polyclonal antibody (STJ113021) at a dilution of 1:100 (40x lens). Secondary antibody: Cy3-conjugated Goat anti-Rabbit IgG (H+L) at 1:500 dilution. Blue: DAPI for nuclear staining.



Immunofluorescence analysis of NIH/3T3 cells using NF-kB p65/RelA Rabbit polyclonal antibody (STJ113021) at a dilution of 1:100 (40x lens). Secondary antibody: Cy3-conjugated Goat anti-Rabbit IgG (H+L) at 1:500 dilution. Blue: DAPI for nuclear staining.



Immunofluorescence analysis of U2OS cells using NF-kB p65/RelA Rabbit polyclonal antibody (STJ113021) at dilution of 1:100. Blue: DAPI for nuclear staining.



Western blot analysis of lysates from 293T cells, using NF-kB p65/RelA Rabbit polyclonal antibody (STJ113021) at 1:10000 dilution. Secondary antibody: HRP Goat Anti-Rabbit IgG (H+L) (STJS000856) at 1:10000 dilution. Lysates/proteins: 25 Mu g per lane. Blocking buffer: 3% nonfat dry milk in TBST. Detection: ECL Basic Kit. Exposure time: 60s.