

Anti-IRF3 antibody (100-200) (STJ112965)

GENERAL INFORMATION

Product Type	Primary antibodies
Applications	WB/IHC-P/IF/ICC/IP/ELISA/ChIP
Host / Source	Rabbit
Reactivity	Human/Mouse/Rat

PRODUCT PROPERTIES

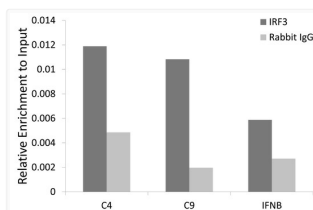
Clonality	Polyclonal
Concentration	Lot specific
Conjugation	Unconjugated
Purification	Affinity purification
Dilution Range	WB:1:1000-1:5000 IHC-P:1:50-1:200 IF/ICC:1:50-1:200 IP:0.5 Mu g-4 Mu g antibody for 200 Mu g-400 Mu g extracts of whole cells ELISA:Recommended starting concentration is 1 Mu g/mL. Please optimize the concentration based on your speci
Formulation	PBS with 0.09% Sodium Azide, 50% Glycerol, pH7.3.
Isotype	IgG
Molecular Weight	Protein Mw: 47kDa Observed Mw: 47kDa
Storage Instruction	Store at-20°C for up to 1 year from the date of receipt, and avoid repeat freeze-thaw cycles.

TARGET INFORMATION

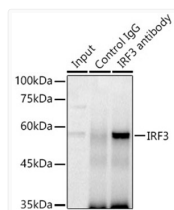
Gene ID	3661
Gene Symbol	IRF3
UniProt ID	IRF3_HUMAN
Immunogen Region	100-200
Immunogen Sequence	PHDPHKIYEFVNSGVGDFSQ PDTSPDTNGGGSTSDTQEDI LDELLGNMVLAPLPDPGPPS LAVAPEPCPQPLRSPSLDNP TPFNLPSENLKRLLVPG E
Specificity	Recombinant fusion protein containing a sequence corresponding to amino acids 100-200 of human IRF3 (NP_001184051.1).

ADDITIONAL INFORMATION

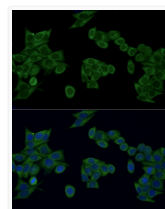
Note STRICTLY FOR FURTHER SCIENTIFIC RESEARCH USE ONLY (RUO). MUST NOT TO BE USED IN DIAGNOSTIC OR THERAPEUTIC APPLICATIONS.



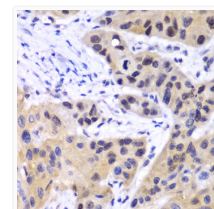
Chromatin immunoprecipitation analysis of extracts of HCT116 cell line, using IRF3 rabbit polyclonal antibody (STJ112965) and rabbit IgG. The amount of immunoprecipitated DNA was checked by quantitative PCR. Histogram was constructed by the ratios of the immunoprecipitated DNA to the input.



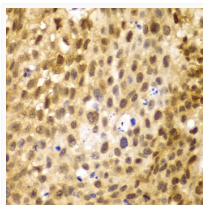
Immunoprecipitation analysis of 300 Mu g extracts of 293T cells using 3 Mu g IRF3 antibody (STJ112965). Western blot was performed from the immunoprecipitate using IRF3 (STJ112965) at a dilution of 1:1000.



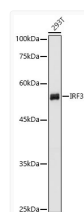
Immunofluorescence analysis of HeLa cells using IRF3 Rabbit polyclonal antibody (STJ112965) at dilution of 1:100 (40x lens). Secondary antibody: ABflo® 488-conjugated Goat Anti-Rabbit IgG (H+L) at 1:500 dilution. Blue: DAPI for nuclear staining.



Immunohistochemistry analysis of IRF3 in paraffin-embedded human esophageal cancer using IRF3 Rabbit polyclonal antibody (STJ112965) at dilution of 1:100 (40x lens). Perform microwave antigen retrieval with 10 mM PBS buffer pH 7. 2 before commencing with immunohistochemistry staining protocol.



Immunohistochemistry analysis of IRF3 in paraffin-embedded human lung cancer using IRF3 Rabbit polyclonal antibody (STJ112965) at dilution of 1:100 (40x lens). Perform microwave antigen retrieval with 10 mM PBS buffer pH 7. 2 before commencing with immunohistochemistry staining protocol.



Western blot analysis of lysates from 293T cells using IRF3 Rabbit polyclonal antibody (STJ112965) at 1:1000 dilution. Secondary antibody: HRP Goat Anti-Rabbit IgG (H+L) (STJS000856) at 1:10000 dilution. Lysates/proteins: 25 Mu g per lane. Blocking buffer: 3% nonfat dry milk in TBST. Detection: ECL Basic Kit. Exposure time: 1s.