

## Anti-EZH2 antibody (1-745) (STJ112944)

### GENERAL INFORMATION

Product Type	Primary antibodies
Applications	WB/IF/ICC/ELISA
Host / Source	Rabbit
Reactivity	Human/Mouse

### PRODUCT PROPERTIES

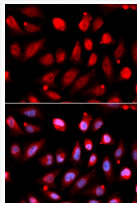
Clonality	Polyclonal
Concentration	Lot specific
Conjugation	Unconjugated
Purification	Affinity purification
Dilution Range	WB:1:500-1:2000 IF/CC:1:50-1:200 ELISA:Recommended starting concentration is 1 Mu g/mL. Please optimize the concentration based on your specific assay requirements.
Formulation	PBS with 0.05% Proclin300, 50% Glycerol, pH 7.3.
Isotype	IgG
Molecular Weight	Protein Mw: 85kDa Observed Mw: 78-110kDa
Storage Instruction	Store at -20°C for up to 1 year from the date of receipt, and avoid repeat freeze-thaw cycles.

### TARGET INFORMATION

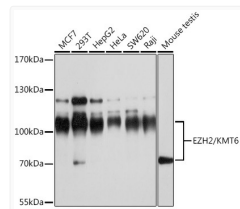
Gene ID	<a href="#">2146</a>
Gene Symbol	<a href="#">EZH2</a>
UniProt ID	<a href="#">EZH2_HUMAN</a>
Immunogen Region	1-745
Immunogen Sequence	MGQTGKKSEKGPVCWRKRVK SEYMLRQLKRFRRRADEVKS MFSSNRQKILERTEILNQEW KQRRIQPVHILTSVSSLRGT RECSVTSDLDFPTQVIPLKT LNAVASVPIMYSWSPLOQNF MVEDETVLHNIPYMGDEVLD QDGT FIEELIKNYDGKVHGD RECGFINDEIFVELVNALGQ YNDDDDDDDGDDPEEREKQ KDLEDHRDDKESRPPPKFPPS DKIFEAISSMFPDKGTAEI
Specificity	Recombinant fusion protein containing a sequence corresponding to amino acids 1-250 of human EZH2/KMT6 (NP_001190176.1).

### ADDITIONAL INFORMATION

Note **STRICTLY FOR FURTHER SCIENTIFIC RESEARCH USE ONLY (RUO). MUST NOT TO BE USED IN DIAGNOSTIC OR THERAPEUTIC APPLICATIONS.**



Immunofluorescence analysis of U2OS cells using EZH2/KMT6 Rabbit polyclonal antibody (STJ112944). Secondary antibody: Cy3 Goat Anti-Rabbit IgG (H+L) at 1:500 dilution.



Western blot analysis of various lysates using EZH2/KMT6 Rabbit polyclonal antibody (STJ112944) at 1:1000 dilution. Secondary antibody: HRP Goat Anti-Rabbit IgG (H+L) (STJS000856) at 1:10000 dilution. Lysates/proteins: 25 Mu g per lane. Blocking buffer: 3% nonfat dry milk in TBST. Detection: ECL Basic Kit. Exposure time: 30s.