

Anti-LYZ antibody (1-100) [S0MR] (STJ112860)

GENERAL INFORMATION

Product Type	Primary antibodies
Applications	WB/IHC-P/IF/ICC/ELISA
Host / Source	Rabbit
Reactivity	Human/Mouse/Rat

PRODUCT PROPERTIES

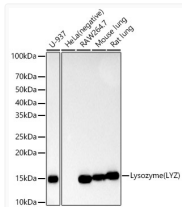
Clonality	Monoclonal
Concentration	Lot specific
Conjugation	Unconjugated
Purification	Affinity purification
Dilution Range	WB:1:30000-1:120000 IHC-P:1:1000-1:10000 IF/CC:1:200-1:2000 ELISA:Recommended starting concentration is 1 μ g/mL. Please optimize the concentration based on your specific assay requirements.
Formulation	PBS with 0.05% Proclin300, 0.05% BSA, 50% Glycerol, pH 7.3.
Isotype	IgG
Molecular Weight	Protein Mw: 17kDa Observed Mw: 15kDa
Storage Instruction	Store at -20°C for up to 1 year from the date of receipt, and avoid repeat freeze-thaw cycles.

TARGET INFORMATION

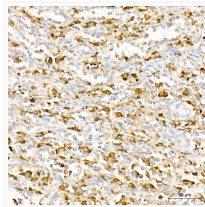
Gene ID	4069
Gene Symbol	LYZ
UniProt ID	LYSC_HUMAN
Immunogen Region	1-100
Immunogen Sequence	MKALIVLGLVLLSVTVQGKV FERCELARTLKRFGMDGYRG ISLANWMCLAKWESGYNTRA TNYNAGDRSTDYGFQINSR YWCNDGKTPGAVNACHLSCS
Specificity	A synthetic peptide corresponding to a sequence within amino acids 1-100 of human Lysozyme (LYZ) (NP_000230.1).

ADDITIONAL INFORMATION

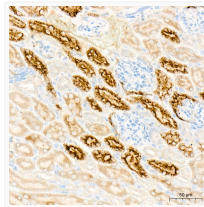
Note **STRICTLY FOR FURTHER SCIENTIFIC RESEARCH USE ONLY (RUO). MUST NOT TO BE USED IN DIAGNOSTIC OR THERAPEUTIC APPLICATIONS.**



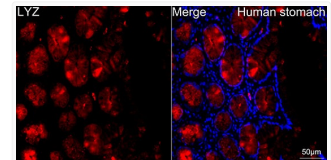
Western blot analysis of various lysates, using Lysozyme (LYZ) antibody (STJ112860) at 1:20000 dilution. Secondary antibody: HRP Goat Anti-rabbit IgG (H+L) (STJS000856) at 1:10000 dilution. Lysates/proteins: 25 μ g per lane. Blocking buffer: 3% non-fat dry milk in TBST. Detection: ECL Basic Kit. Exposure time: 90s.



Immunohistochemistry analysis of Lysozyme (LYZ) in paraffin-embedded human spleen tissue using Lysozyme (LYZ) rabbit monoclonal antibody (STJ112860) at a dilution of 1:900 (40x lens). Perform high pressure antigen retrieval with 10 mM citrate buffer pH 6.0 before commencing with immunohistochemistry staining protocol.



Immunohistochemistry analysis of Lysozyme (LYZ) in paraffin-embedded mouse kidney tissue using Lysozyme (LYZ) rabbit monoclonal antibody (STJ112860) at a dilution of 1:900 (40x lens). Perform high pressure antigen retrieval with 10 mM citrate buffer pH 6.0 before commencing with immunohistochemistry staining protocol.



Immunofluorescence analysis of paraffin-embedded Human stomach using Lysozyme (LYZ) rabbit monoclonal antibody (STJ112860) at a dilution of 1:400 (40x lens). Secondary antibody: Cy3 Goat Anti-rabbit IgG (H+L) at 1:500 dilution. Blue: DAPI for nuclear staining.